

THE METROPOLITAN MUSEUM OF ART



3 0620 00658476 6

119.8

T
1943⁴

THE METROPOLITAN MUSEUM
OF ART

THE LIBRARY



PRESENTED BY

~~PARKE-BERNET GALLERIES~~

102684

SALE NUMBER 452

FREE PUBLIC EXHIBITION

*From Saturday, April 3, to Time of Sale
Weekdays 9 to 5:30 + Closed Sunday*

PUBLIC AUCTION SALE

*Thursday, Friday and Saturday Afternoons
April 8, 9 and 10, at 2 p.m.*

EXHIBITION & SALE AT THE
PARKE-BERNET GALLERIES · INC

30 EAST 57 STREET · NEW YORK

PLAZA 3-7573

· · ·

Sales Conducted by

HIRAM H. PARKE + OTTO BERNET
HARRY E. RUSSELL, JR + LOUIS J. MARION

1943



THE HAMMOND RESIDENCE, BONAPARTE PARK, BORDENTOWN, N. J.

NYM402-P294

NOTABLE ENGLISH FURNITURE
of the XVIII Century

PORTRAITS AND BRITISH SPORTING PAINTINGS

CHINESE PORCELAINS, POTTERY AND JADES

DRAWINGS · PRINTS · FUR RUGS

IMPORTANT ANTIQUE CHINESE CARPETS

Collection of

HARRIS AND ELISE HAMMOND

*Removed from Their Residence at
Bonaparte Park, Bordentown, N. J.*

SOLD BY THEIR ORDER



Public Auction Sale
April 8, 9 and 10 at 2 p.m.

PARKE-BERNET GALLERIES · INC

NEW YORK · 1943

PRICED CATALOGUES

A priced copy of this catalogue may be
obtained for one dollar for each
session of the sale plus
the cost of the
catalogue

None of the items in the present
catalogue is subject to the Fed-
eral Excise Tax as set forth in
paragraph 11 of the Conditions
of Sale.

CONDITIONS OF SALE

The property listed in this catalogue will be offered and sold subject to the following terms and conditions:

1. The word "Galleries", wherever used in these Conditions of Sale, means the Parke-Bernet Galleries, Inc.
2. The Galleries has exercised reasonable care to catalogue and describe correctly the property to be sold, but it does not warrant the correctness of description, genuineness, authenticity or condition of said property.
3. Unless otherwise announced by the auctioneer at the time of sale, all bids are to be for a single article even though more than one article is included under a numbered item in the catalogue. If, however, the articles under any one numbered item are designated as a "Lot" then bids are to be for the lot irrespective of the number of articles described in such item.
4. The highest bidder accepted by the auctioneer shall be the buyer. In the event of any dispute between bidders, the auctioneer may, in his discretion, determine who is the successful bidder, and his decision shall be final; or the auctioneer may reoffer and resell the article in dispute.
5. Any bid which is not commensurate with the value of the article offered, or which is merely a nominal or fractional advance over the previous bid, may be rejected by the auctioneer, in his discretion, if in his judgment such bid would be likely to affect the sale injuriously.
6. The name and address of the buyer of each article, or lot, shall be given to the Galleries immediately following the sale thereof, and payment of the whole purchase price, or such part thereof as the Galleries may require, shall be immediately made by the purchaser thereof. If the foregoing condition, or any other applicable condition herein, is not complied with, the sale may, at the option of the Galleries, be cancelled, and the article, or lot, reoffered for sale.
7. Unless the sale is advertised and announced as an unrestricted sale, or a sale without reserve, consignors reserve the right to bid.
8. Except as herein otherwise provided, title will pass to the highest bidder upon the fall of the auctioneer's hammer, and thereafter the property is at the purchaser's sole risk and responsibility.
9. Articles sold and not paid for in full and not taken by noon of the day following the sale may be turned over by the Galleries to a carrier to be delivered to a storehouse for the account and risk of the purchaser, and at his cost. If the purchase price has not been so paid in full, the Galleries may either cancel the sale, and any partial payment already made shall thereupon be forfeited as liquidated damages, or it may resell the same, without notice to the buyer and for his account and risk, and hold him responsible for any deficiency.

10. If for any cause whatsoever any article sold cannot be delivered, or cannot be delivered in as good condition as the same may have been at the time of sale, the sale will be cancelled, and any amount that may have been paid on account of the sale will be returned to the purchaser.
11. Unless purchased for resale, the buyer will be required to pay the Federal Excise Tax equivalent to 10 per centum of the price for which sold on jewelry, clocks, silver, gold, furs, etc. However, articles of these categories sold for certain classes of consignors are exempt from this tax. Items in this catalogue subject to the Federal Excise Tax are designated by an asterisk (*).
12. Unless exempt from the payment thereof, the buyer will also be required to pay the New York City sales tax of 1 per centum of the price for which all articles are sold.
13. The Galleries, subject to these Conditions of Sale and to such terms and conditions as it may prescribe, but without charge for its services, will undertake to make bids for responsible parties approved by it. Requests for such bidding must be given with such clearness as to leave no room for misunderstanding as to the amount to be bid and must state the catalogue number of the item and the name or title of the article to be bid on. If bids are to be made on several articles listed as one item in the catalogue, the request should state the amount to be bid on each article, unless the item contains the notation "Lot", in which case the request should state the amount to be bid "For the Lot". The Galleries reserves the right to decline to undertake to make such bids.
14. The Galleries will facilitate the employment of carriers and packers by purchasers but will not be responsible for the acts of such carriers or packers in any respect whatsoever.
15. These Conditions of Sale cannot be altered except in writing by the Galleries or by public announcement by the auctioneer at the time of sale.

SALES CONDUCTED BY
HIRAM H. PARKE • OTTO BERNET
HARRY E. RUSSELL, JR • LOUIS J. MARION

PARKE-BERNET GALLERIES • INC

30 EAST 57 STREET • NEW YORK

Telephone PLAZA 3-7573

Cable PARKGAL

HIRAM H. PARKE • *President*

OTTO BERNET • ARTHUR SWANN • LESLIE A. HYAM • *Vice-Presidents*
EDWARD W. KEYES • *Secretary and Treasurer*

ORDER OF SALE

FIRST SESSION

THURSDAY AFTERNOON, APRIL EIGHTH

Chinese Porcelains and Pottery	1- 36
Chinese Semi-Precious Mineral Carvings	37- 56
Chinese Paintings on Silk	57- 65
Chinese and Japanese Textiles and Embroideries	66- 78
English XVIII Century Furniture and Decorations	79-169
Antique Chinese Rugs	170-180
Domestic Carpets	181-184

SECOND SESSION

FRIDAY AFTERNOON, APRIL NINTH

Drawings	185-206
English and French Color Prints	207-229
English XVIII Century Furniture and Decorations	230-343
Fur Rugs	344-353

THIRD AND LAST SESSION

SATURDAY AFTERNOON, APRIL TENTH

Paintings	354-390
English XVIII Century Furniture and Decorations	391-503
Antique Chinese Carpets	504-528

FIRST SESSION

Thursday, April 8, 1943, at 2 p. m.

CATALOGUE NUMBERS 1 TO 184 INCLUSIVE

CHINESE PORCELAINS AND POTTERY

The porcelains and pottery in this section of the catalogue were purchased from S. & G. Gump Co. of San Francisco.

1. BLUE AND WHITE 'SOFT PASTE' ROUGE BOX

K'ang Hsi

20- Round box painted with a river landscape with figures in a sampan, and bands of floral ornament.

Diameter 2¾ inches

2. PAIR IMPERIAL YELLOW BOWLS

Ch'ien Lung

80- Small circular bowl delicately incised with floral rosettes and floating cloud forms and glazed yellow upon the interior and exterior. Six-character seal mark of the reign. Have stands.

Diameter 4¾ inches

3. CAMELLIA LEAF GREEN BRUSH HOLDER

Ch'ien Lung

25- Cylindrical *pi t'ung*, coated with a monochrome deep green glaze with close spiderweb crackle. Lip ground.

Height 5⅞ inches

4. PAIR CLAIR DE LUNE BOWLS

Yung Chêng

65- Small bell-form bowl with exterior moon blue glaze. Six-character mark of the reign. Have stands.

Diameter 4¾ inches

5. FIVE BLEU-VERTE PORCELAIN RICE BOWLS

Yung Chêng

50- Painted in delicate *famille verte* enamels and underglaze blue with a mandarin and his wife upon a mountain terrace, gazing out to sea, and a fisherman with a load of fruit in his sampan. Six-character mark.

Diameter 3⅝ inches

6. PAIR FAMILLE ROSE STRAWBERRY BOWLS

Ch'ien Lung

60- Bell-shaped bowl in vitreous white porcelain, delicately enameled in the pastel shades of the *famille rose* with branches of strawberries and bamboo, and flying butterflies. Seal mark of the reign. Have stands.

Diameter 4¾ inches

7. PAIR BLUE AND WHITE 'SOFT PASTE' ROUGE BOXES

Yung Chêng

80- Round cushion-shaped box, painted with the 'Hundred Boys' decoration in shades of underglaze cobalt in a crackled old ivory ground. One repaired. Apocryphal six-character mark of K'ang Hsi. Have stands.

Diameter 5½ inches

8. PAIR ROSE PINK BOWLS

Ch'ien Lung

60- Graceful bell-shaped bowl on hollow ring foot, the exterior coated with a delicate rose pink glaze. Apocryphal four-character seal mark of K'ang Hsi. Have stands.

Diameter 4½ inches

35- 9. PAIR BLUE AND WHITE 'SOFT PASTE' PORCELAIN GIFT JARS *Ch'ien Lung*
 Finely painted in shades of underglaze cobalt with branches of the Three Fruits: peach, pomegranate, and the Buddha's-hand citron, between collars of bay leaves and *ju-i* ornament. One has teakwood cover. *Height 6½ inches*

65- 10. PAIR FAMILLE VERTE SHALLOW BOWLS *K'ang Hsi*
 Enameled in the brilliant *famille verte* with branches of chrysanthemums and nelumbian plants and birds perched on rockery, the exterior painted with flowers and butterflies in a dotted green ground with four reserves. Six-character mark of the reign. *Diameter 7½ inches*

50- 11. PAIR DECORATED PORCELAIN CYLINDRICAL VASES *K'ang Hsi*
 Painted in *rouge de cuivre* with a group of utensils and flower vases, between two collars of formal lappets. Have stands. *Height 9½ inches*

100- 12. TWO TERRA COTTA MORTUARY FIGURES OF DANCERS *Wei*
 Graceful female figures, one dancing erect, the other swaying into a curtsy. Repaired. Have stands. *Heights 11 and 7¼ inches*

90- 13. BLEU-VERTE PORCELAIN CONIFORM BOWL AND COVER *Yung Chên*
 Each painted in cobalt blue, *rouge de fer*, green, and aubergine, with swallows fluttering around hanging branches of the *mei hua* blossom. Six-character mark of the reign. Small chip. *Diameter 7¾ inches*

50- 14. CORAL RED BOWL WITH FAMILLE ROSE DECORATION *Ch'ien Lung*
 Quatrefoil circular bowl, the exterior glazed coral red, with gilded floral decoration and four circular reserves enameled in colors with floral clusters. Seal mark of the reign. *Diameter 7¾ inches*

80- 15. PAIR FAMILLE ROSE PORCELAIN QUADRANGULAR FLOWER POTS *Ch'ien Lung*
 Jardiniere of white porcelain with 'lemon peel' surface, enameled in the brilliant colors of the *famille rose* with birds amid peony shrubs, the rims diapered in iron red. *11 inches square*

85- 16. APPLE RED BOTTLE *Late K'ang Hsi*
 Ovoid body sloping into a tall tubular neck; coated with a thin bluish red glaze shoaling around the neck and upon the shoulder to disclose the greenish white ground. *Height 13 inches*

[See illustration on page 24]

55- 17. PAIR NANKING BLUE AND WHITE DISHES WITH FAMILLE ROSE DECORATION *Chia Ch'ing*
 Enameled in gay colors with women and children playing in a garden, within a diapered cobalt blue border. *Length 14½ inches*



[NUMBER 18]

18. PAIR FAMILLE ROSE FIGURES OF PHOENIXES

Ch'ien Lung

Tall standing figure of a wattled bird with imbricated rose, blue, green, and buff wing feathers and aubergine neck plumage, one claw raised and resting on a high rock tinted green. Some repairs.

Heights 16¾ and 17 inches

[See illustration]

19. PAIR CAMELLIA LEAF GREEN GLAZED POTTERY QUADRANGULAR VASES

Late Ming or K'ang Hsi

Flaring knopped quadrangular beaker coated with a green glaze with minute fishroe crackle.

Height 9¾ inches

20. PAIR TERRA COTTA EQUESTRIAN STATUETTES

Wei

Conventionalized figure wearing mushroom hat and red-tinted robes, mounted upon a galloping horse. Repaired, and with earthy incrustations.

Height about 12½ inches



[NUMBER 21]

[NUMBER 22]

400- 21. FAMILLE VERTE CLUB-SHAPED VASE

Rouleau vase with incurvate neck, painted in the *famille verte* enamels with cranes and spotted deer, emblems of Longevity, in a rocky landscape with pine groves and flowering shrubs.

K'ang Hsi

Height 18 inches

[See illustration]

60- 22. FAMILLE ROSE BEAKER-FORM VASE

Baluster-form beaker with high wide flaring neck, exquisitely painted in the early *famille rose* enamels with a group of ladies and officials surrounding a mandarin and his wife, the neck with two Immortals and an acolyte in a rocky landscape.

Yung Chên

Height 17½ inches

[See illustration]



[NUMBER 24]

24. TWO GOLD-DECORATED POWDER BLUE PORCELAIN BALUSTER VASES *K'ang Hsi*
 Graceful baluster-shaped body rounding into a high flaring neck and clothed in a stippled *bleu soufflé* glaze, re-etched in gilding with panels of Flowers of the Seasons springing from rockery. Have stands. *Heights 18¼ and 18½ inches*

[See illustration]

25. FLAMBÉ VASE

Ch'ien Lung

Large ovoid vase with wide flaring neck molded in relief with prunus blossoms; the whole coated with a strawberry glaze with milky blue streakings. *Height 20½ inches*

26. POLYCHROMED TERRA COTTA ANIMAL STATUETTE

T'ang

Sepulchral tile figure of a horse, his off forefoot pawing the air, his saddle embellished with two wing-like drapes; traces of vermilion polychromy. Repaired. Has stand.

Height 14½ inches



[NUMBER 27]

27. PAIR MAMMOTH MAZARINE BLUE FU LIONS

Ferocious seated figure with scaly back and curved horns, seated on a base stippled with blue and white glazes.

XVIII Century

Height 31½ inches

[See illustration]

28. BLUE AND WHITE LOTUS BOWL

Large resonant bowl boldly painted with undulating stems of lotus flowers and curling foliage. Six-character mark of the reign. Has stand.

K'ang Hsi

Diameter 14¾ inches

29. PAIR FAMILLE VERTE TEMPLE VASES

Baluster-form potiche with wide cylindrical mouth, decorated upon the shoulders with a collar of deep lappets patterned with pendants of aubergine and red chrysanthemums amid green foliage. One repaired at neck. Have covers. *Heights 14¼ and 14½ inches*

K'ang Hsi

30. FAMILLE VERTE GINGER JAR WITH COVER

Ovoid jar with short neck and cap cover, painted in the *famille verte* enamels with four leaf-shaped reserves of Flowers of the Seasons with hovering birds and butterflies in a green ground dotted with flower heads, the shoulder patterned with diapers and four floral reserves.

K'ang Hsi

Height 13¾ inches

31. GARNITURE OF TWO FAMILLE ROSE PLATTERS AND TWO PLATES *Ch'ien Lung*
Painted in the gaily colored low temperature enamels with landscape scenes, figures of ladies and children, merchants, etc., within a border garland of flowers tied with a gilded rope. One repaired. Together with a small *famille verte* plate of the K'ang Hsi period, chipped. [Lot.]

32. PAIR BLUE AND WHITE GINGER JARS *XVIII Century*
Painted in blue on a white ground with clusters of plum blossoms on a ground representing the cracking of the winter's ice in the spring; have silver-inlaid teakwood covers. Together with a ginger jar decorated with Shou characters. [Lot.]
Heights 10 and 10¼ inches

33. PAIR FLOUR WHITE PORCELAIN COVERED VASES, WITH MOLDED DECORATION *K'ang Hsi*
Globular vase with flat mushroom cover, incised and molded in light relief with flowers, bamboo, and *ling chih* fungus under a white glaze. *Height 9 inches*

34. POWDER BLUE PYRIFORM VASE *Ch'ing*
Pear-shaped body with narrow flaring neck, coated with a flocculent *bleu soufflé* glaze. *Height 10 inches*

35. TWO DECORATED VASES
Brush jar of the Yung Chêng period (repaired), decorated with figures of Shou Lao and attendant, and having cover and stand; and a baluster vase painted with swimming fish, with cover. *Heights 8½ and 9½ inches*

36. TWO MONOCHROME PORCELAIN VASES
Camellia-leaf green wide-mouthed spirally fluted jar; and a mazarine blue melon-form vase with the seal mark of Ch'ien Lung. *Heights 9½ and 8¾ inches*

CHINESE SEMI-PRECIOUS MINERAL CARVINGS

The semi-precious mineral carvings in this section of the catalogue were purchased from S. & G. Gump Co. of San Francisco.

37. SEVEN SPINACH JADE TEA CUPS
Cylindrical cup with ring foot, in translucent mottled deep green moss jade with soft polish. Five incised with seal marks of Ch'ien Lung. *Height 2½ inches*

38. PAIR BRONZE AND CLOISONNÉ ENAMEL HEXAGONAL BOWLS
Each panel enameled with a lotus blossom with scrolling foliage. *Width 6¾ inches*

39. CAMPHOR JADE BOWL AND COVER
Small rice bowl and cover in translucent flocculent grayish white jade. Has stand. *Diameter 4¾ inches*

40. PAIR GILDED BRONZE FU LION MEDALLIONS

Ch'ing

Temple wall medallion, embossed with a *Fu* lion head with loose ring handle.

Diameter 8½ inches

41. PAIR MUTTON-FAT JADE BOWLS

Small bowl with straight tapering sides in translucent grayish green jade.

Diameter 4½ inches

42. CARVED SPINACH JADE SEAL

Massive square block incised with the official seal in large characters, surmounted by a formalized twin dragon figure; in dark green jade. Ming type.

5 inches square

43. CARVED YELLOW JADE STATUETTE OF BUDDHA

Seated crosslegged with one hand raised in benediction, the other holding a jar of Healing; in greenish yellow jade. Has stand.

Height 6¼ inches

44. TWO JAPANESE DECORATED LACQUER BOXES

Two-section square box lacquered in relief with iris in the style of Ritsuo; and large paper-box inlaid with a mother of pearl floral diaper. [Lot.]

45. PEKING RED AND WHITE CAMEO GLASS GINGER JAR

Ch'ien Lung

Carved on a flocculent white ground in ruby relief with a joyous group of children playing in a garden with a pagoda, the cover with a frieze of running children and pagoda finial. A vase of fine quality.

Height 7¾ inches

46. CARVED SPINACH JADE TRIPOD INCENSE BURNER

Chia Ch'ing

Flanged bowl carved with a band of dragon fret, with two demon-head loose ring handles and four small rings depending from the lip; on three monster-head feet. Domed cover pierced with dragon and *lei wên* fret, and lotus finial. Six-character mark of the reign. Has stand.

Height 7 inches

[See illustration on page 22]

47. TWO PEKING EMERALD AND WHITE CAMEO GLASS QUADRANGULAR VASES

Ch'ien Lung

Quadrangular vases in milk white glass, cut in emerald green relief with branches of Flowers of the Seasons. Four-character marks of the reign. Have stands.

Heights 8¼ and 8½ inches

48. PAIR FINELY CARVED AND RETICULATED IVORY BOXES

Ch'ien Lung

Oblong box and cover exquisitely pierced with a fret diaper and carved with small carouches of garden landscapes with tiny figures, daintily colored. Repaired.

Length 9¼ inches



[NUMBER 49]

W. H. Dawson

49. CARVED SPINACH JADE WINE EWER

Ch'ien Lung

Pyriform body carved in undercut relief with the figures of the Eight Immortals with their attributes in a pine grove, the tall spout and loop handle entwined with dragons; upon the cover is the figure of a sage upon a lotus throne. The flaring hollow foot is incised in two places with the seal mark of the reign. Has stand. *Height 13 inches*

[See illustration]

60- 50. PAIR CARVED ROCK CRYSTAL AND AMETHYSTINE QUARTZ FLOWERING SHRUBS
Peony shrubs with amethyst and rock crystal blossoms and crystal leaves, in enamel
jardinières decorated with lotus scrollings. Have stands. *Height about 20 inches*



[NUMBER 51]

51. PAIR IMPERIAL CARVED SPINACH JADE TABLE SCREENS PLAQUÉ WITH SEMI-PRECIOUS MINERALS

Ch'ien Lung

✓60- Circular discs beautifully carved upon the obverse, one depicting the abode of the Immortals in the Shou Shan, or Heavenly Isles, with a group of male and female deities at refreshments; the other, Hsi Wang Mu in a chariot drawn by a spotted stag, with three attendants. Upon the reverse of each disc are *plaqué* a carved white jade vase, beaker and *pi t'ung*, with carnelian handles, upon purple agate stands. Carved and pierced teakwood stands.

Total height 18 inches

[See illustration]

30- 52. CARVED AND POLYCHROMED SOAPSTONE STATUETTE OF KUAN YIN *Ch'ien Lung*
Seated figure in the *lalita* pose, wearing a hooded buff robe painted with bamboos and edged with vermilion. Has stand. *Height 13½ inches*

50- 53. ARCHAIC BRONZE TWO-HANDLED VASE *Han*
Flattened quadrangular pyriform vase with two loop handles. Encrusted green patina. Has stand. *Height 15¾ inches*

25- 54. CARVED GREEN SOAPSTONE LOTUS BOWL
Large shallow bowl in the form of a lotus leaf edged with blossoms. Has carved teak-wood lotus stand. *Diameter 16¾ inches*

57- 55. GREEN BRONZE DRAGON VASE *Han*
Pyriform vase with a long-tailed *chih lung* coiled upon the shoulder. Green bronze with russet red patina. *Height 12½ inches*

55- 56. PAIR JAPANESE DAMASCENED IRON STIRRUPS AND A MARINE BOWL
Stirrups inlaid with foliage and tendril scrollings; shallow bowl embossed with two swimming gold fish and with archaistic Chinese inscription. [Lot.] *Diameter of bowl 20 inches*

CHINESE PAINTINGS ON SILK

The paintings in this section of the catalogue were purchased from S. & G. Gump Co. of San Francisco.

65- 57. MANDARIN DUCKS AND CHERRY BLOSSOMS *Ming*
Two ducks preening themselves on the rocks at the side of a lake; above them is a gnarled cherry tree with pink blossoms overhanging the water, and enlivened with figures of two swallows.

70- 58. EGRET UPON A GNARLED BRANCH, BY MA KWAI *Ch'ing*
The snowy white bird, about to fold its wings, has lighted upon a gnarled jutting branch covered with frozen rime. In the style of the Southern Sung Dynasty.



[NUMBER 59]

70- 59. TWO HERONS

Ming

Figures of two gray and white water fowl amid blue rocks, on the nearest of which are perched two swallows; behind them is a gnarled prunus tree with white blossoms and a cluster of red anemones.

[See illustration]

65- 60. PHEASANTS AND SWALLOWS AMID FLOWERS, AFTER LO CHI

Ch'ing

Two pheasants are perched upon an outcropping rock amid a cluster of red poppies; above is a gnarled branch of pink hawthorn blossoms, upon which are perched two swallows.

75- 61. WHITE GEESE, BY SIAO TSENG

Yüan

Two large white geese before a dark background of pink lotus blossoms and green leaves, with a pool faintly suggested. In case.

80- 62. SWALLOWS AND DUCKS, BY SIAO TSENG

Yüan

Two mandarin ducks in gaily colored plumage swimming in a pond, at the foot of a willow with overhanging branches, beside a shrub of pink blossoms; overhead two swallows are wheeling. In case.

60- 63. SCENES IN THE SHOU SHAN: FOUR PAINTINGS WITH EMBROIDERED FIGURES

XVIII Century

Depicting rocky landscapes with trees and pagodas peopled with Immortals, sages and other figures.

60- 64. SCENES IN THE SHOU SHAN: FOUR PAINTINGS WITH EMBROIDERED FIGURES

XVIII Century

Companion scenes to the preceding.

70- 65. SCENES IN THE SHOU SHAN: FOUR PAINTINGS WITH EMBROIDERED FIGURES

XVIII Century

Companion scenes to the preceding.

CHINESE AND JAPANESE TEXTILES AND EMBROIDERIES

95- 66. CHINESE GOLD- AND SILK-EMBROIDERED MANDARIN COAT

XVIII Century

Old gold silk, embroidered with golden Imperial dragons writhing amid blue clouds and with rose pink bats, interspersed with crimson double Shou emblems, upon a gold fretted diaper; deep border of conventionalized waves, in brilliant shaded silks.

10- 67. JAPANESE APPLE GREEN SILK AND GOLD BROCADE PRIEST ROBE XVIII Century

Celadon green silk brocaded with scaly dragons and phoenixes amid branches of lotus, peonies, and pomegranates, in delicate pastel shades, and embellished with six salmon pink gold brocade canonical patches.

6 feet 10 inches x 45 inches

68. JAPANESE SAPPHIRE BLUE SILK AND GOLD BROCADE PRIEST ROBE

15-
Brocaded with columns of golden dragons outlined in shades of green and blue, and patched with six salmon pink and silver brocade squares of warrior figures.

6 feet 9 inches x 45 inches

69. THREE CHINESE KO'SSU SILK AND GOLD TAPESTRY PANELS XVIII Century

10-
A pair in sapphire blue silk woven with three gold Imperial dragons guarding the jewel, surrounded by clouds and bats, and valanced in olive green silk brocade (one imperfect); and a canary yellow silk frontal with blue Imperial dragon medallions. [Lot.]

Panels: 5 feet 6 inches x 32 inches

Frontal: 39½ inches x 38 inches

37-
70. JAPANESE SILK AND GOLD BROCADE PRIEST ROBE

Patterned in pastel silks with pink, mauve, blue, green, and white lotus and peony blossoms with green leafage, in a shimmering gold-brocaded yellow ground.

6 feet 8 inches x 47 inches

27-
71. JAPANESE MIDNIGHT BLUE SILK AND SILVER BROCADE PRIEST ROBE

XVIII Century

Lavishly brocaded with silver dragons writhing through waves and amid blue, orange and yellow clouds, and pieced.

6 feet 6 inches x 45 inches

35-
72. CHINESE GOLD- AND SILK-EMBROIDERED SAPPHIRE BLUE SATIN MANDARIN COAT

XVIII Century

Embroidered with golden Imperial dragons writhing among blue clouds, and with rose pink bats and emblems, above a deep border of conventionalized waves in shaded colors, in the chain stitch technique.

15-
73. JAPANESE SAPPHIRE BLUE SILK AND GOLD BROCADE PRIEST ROBE

Sapphire blue damask, pieced and brocaded with scaly golden dragons amid clouds and flames, in pursuit of the jewel; embellished with salmon pink and gold brocade canonical patches.

6 feet 9 inches x 45 inches

135-
74. RARE CHINESE KO'SSU SILK AND GOLD TAPESTRY PANEL

XVIII Century

Upon an aubergine ground with flowering trees are numerous small islands, upon which combats are in progress between mounted warriors and various deities of the elements, together with groups of pilgrims, Immortals, and other scenes. An upper frieze panel depicts a mandarin surrounded by fan and banner bearers and receiving dispatches from various courtiers. Woven in pastel shades with fawns and rose predominating, enriched with gold threads.

7 feet 2 inches x 5 feet 6 inches



[NUMBER 75]

75. RARE CHINESE KO'SSU SILK AND GOLD TAPESTRY PANEL *XVIII Century*
 Depicting numerous groups of figures upon a gray plain, with actors portraying mounted warriors and banner bearers in fierce conflict, surrounding a walled enclosure; within are two mandarins enthroned at low tables, attended by many courtiers, watching a sword duel between two young warriors. The scene is separated by a frieze of temple ornaments from an upper panel depicting the thunder and wind demons in combat with two mounted warriors and a banner bearer. Woven in pastel colors, enriched with gold threads.

7 feet x 5 feet

[See illustration]

76. JAPANESE GOLD-EMBROIDERED OLIVE GREEN SATIN COAT

Sumptuously embroidered with three-clawed golden dragons writhing amid the waves and above the clouds; with sash.

77. FOUR CHINESE SILK-EMBROIDERED DAMASK GARMENTS XVIII-XIX Century

Two cerulean blue silk damask coats with embroidered black satin borders; sage green silk damask skirt embroidered with fields of pastel blossoms and butterflies; and an embroidered apricot satin panel. [Lot.]

78. FIVE CHINESE EMBROIDERED SILK RUNNERS

Three in primrose yellow silk damask embroidered in brilliant silks with a phoenix holding a peony branch; and a pair in apricot satin, embroidered in silks and gold threads with vases of flowers and nosegays. [Lot.]

ENGLISH XVIII CENTURY FURNITURE AND DECORATIONS

79. REGENCY MAHOGANY MANTEL CLOCK

Dial set in a panel beneath an overhanging portico.

English, circa 1815

Height 6 inches

80. BRONZE MASK OF ABRAHAM LINCOLN

Replica of the life mask made by Leonard W. Volk, 1860. Cast for subscribers and inscribed to Bram Stoker.

Height 8 inches

81. PAIR TURNED THUYA WOOD COMPOTES

Small round dish on baluster-turned stem. One repaired.

English, circa 1810

Diameter 7 inches

82. THREE NEEDLEPOINT BELL PULLS

With various floral and animal designs. [Lot.]

83. DERBYSHIRE SPAR VASE, MOUNTED AS LAMP

Hemispherical vase of deeply colored 'Blue John', on square plinth. Fitted for electricity, with shade.

English, XVIII Century

Height 19 inches

84. DERBYSHIRE SPAR VASE, MOUNTED AS LAMP

Very similar to the preceding, the mineral of yellowish buff color. Fitted for electricity, with shade.

English, XVIII Century

Height 19½ inches

85. STATUARY MARBLE BUST

Head and shoulders of a smiling nymph in flowing scarf. Signed.

A. Parisini, Italian: XIX Century

Height 15½ inches

86. GOLD-DECORATED MIRROR BLACK PORCELAIN VASE, MOUNTED AS LAMP

Truncated baluster-form vase, with mirror black glaze etched in gold with panels of phoenix and dragon, and swimming fish. Fitted for electricity, with shade.

K'ang Hsi

Height 24 inches

87. PAIR BRASS ANDIRONS

Georgian Style

Baluster column supporting a gadrooned mushroom finial, on slightly arched flat base.

*Height 24 inches*88. SHERATON MAHOGANY MANTEL CLOCK *Kenneth MacLennan, London, circa 1820*

Arched quadrangular case inlaid in brass and with cornucopia and ring handles.

Height 11 inches

89. CUT GLASS DECANTER SERVICE, IN ROSEWOOD CASE

English, circa 1840

Brass-bound oblong case, containing three facet-cut glass decanters and ten assorted glasses.

Length of case 19½ inches

90. LATE GEORGIAN INLAID SYCAMORE TOILET MIRROR

English, circa 1820

Composed of an oblong swivel mirror on turned uprights surmounting serpentine oblong base with three drawers and fretted gallery.

Height 18 inches

91. PAIR GEORGIAN BRASS ANDIRONS IN THE ADAM TASTE

With two vase finials, on square fluted and tapering supports. Together with a steel poker, shovel and tongs. [Lot.]

Height of andirons 13½ inches

92. DERBYSHIRE SPAR VASE, MOUNTED AS LAMP

English, XVIII Century

Small ovoid vase on cylindrical plinth. Fitted for electricity, with shade.

*Height 21 inches*93. CARVED MAHOGANY MINIATURE TRIPOD TABLE *English, XVIII-XIX Century*

Charming small cabinetmaker's model with tilting top and vase-turned support.

Height 7¼ inches

From Arthur S. Vernay, Inc., New York

94. BLUE AND WHITE PORCELAIN GALLIPOT, MOUNTED AS LAMP

Painted with tall narrow panels of landscapes in the 'willow pattern' style. Fitted for electricity, with shade.

Height 21½ inches

95. BRASS FIRE GUARD AND PAIR GOTHIC STEEPLE-TOP ANDIRONS

English, Early XIX Century

Fire guard pierced with a band of leaf scrollings and with hinged ends; square columnar andirons surmounted by crockets, of the period of the Gothic Revival. [Lot]

*Height of andirons 29 inches; length of fire guard 41½ inches*96. HEPPLEWHITE MAHOGANY UPHOLSTERED STOOL *English, XVIII-XIX Century*

Shaped oblong top in green cut velours, on molded cabriole legs with peg feet.



[NUMBER 97]

97. CELESTIAL AND TERRESTRIAL GLOBES ON SHERATON TURNED MAHOGANY STANDS
W. & S. M. Bardin, circa 1810

120- A fine pair of library globes, engraved from drawings by Mr Arrowsmith, geographer, with 'Additions to 1807'; on mahogany stand with bronze meridian, and round turned and tapering legs.
Height 27 inches; diameter of globe 17 inches

[See illustration]

30- 98. SHERATON INLAID MAHOGANY AND BEECHWOOD CANDLESTAND

English, circa 1805

Rounded oblong top, crossbanded, and supported on a turned beechwood pedestal and splayed tripod finished mahogany.
Height 29 inches; width 18½ inches

40- 99. PAIR BRASS ANDIRONS

Queen Anne Style

Globe with tall knopped finial, on scrolled base modeled with a coroneted bust of Queen Anne flanked by coiled dolphins. Together with a three-fold mesh fire screen. [Lot.]

Height 30½ inches

45- 100. CARVED, GILDED, AND POLYCHROMED FIGUREHEAD

English (?), dated 1626

Mermaid with scrolled tail supporting a painted escutcheon, redecorated.

Height 25 inches

25- 101. TWO CHINESE VERMILION LACQUER VALISES

In leather lacquered a brilliant red, with stamped and applied pierced medallions of vases of flowers, butterflies, and dragon and phoenix. As exhibited. *Lengths 29 and 31 inches*



[NUMBER 102]

102. PAIR SHERATON MAHOGANY POLE SCREENS, WITH SILK NEEDLEWORK PANELS
English, Late XVIII Century

130 - Slender quadrangular standard on support flaring into square base, inlaid with stringing and crossbanded; adjustable shield-shaped panels worked in long and short stitch and French knots with young girls with lambs and fishing rod, respectively, in landscapes within oval medallions, surrounded by bowknotted floral garlands, on ecru satin.

Height 5 feet 3 inches; width 14½ inches

[See illustration]

85- 103. LOUIS XV FRUITWOOD TABLE DE CHEVET

French, XVIII Century

Oblong top with three-quarter rim, plain valanced front with two drawers on slender quadrangular slightly cabriole legs.

Height 27 inches; width 18½ inches

42- 104. PAIR BRASS AND IRON ANDIRONS

XVIII Century

Tall baluster, with spherical finial and iron splayed base. Together with three brass fire tools of later type, and a wire mesh five-fold spark guard. [Lot.]

Height of andirons 28½ inches



[NUMBER 105]

720- 105. PAIR HEPPLEWHITE CARVED MAHOGANY AND GREEN TWILL UPHOLSTERED ARMCHAIRS

English, XVIII Century

Cartouche-form back, armpads, and shield-shaped seat covered in light green twill; serpentine molded arm supports, cabriole legs in the French taste carved with fan flutings at the knee.

[See illustration]

120- 106. HEPPLEWHITE CARVED MAHOGANY ARMCHAIR

English, XVIII Century

Very similar to the preceding, with anthemion and husk carving upon the knees.

107. SHERATON INLAID MAHOGANY OCCASIONAL TABLE *English, circa 1810*
 Hinged oblong top with serpentine outline; one drawer, on square tapered legs with spade feet. Inlaid and banded with rosewood and holly. *Height 28 inches; width 20 inches*

108. TWO ELMWOOD WINDSOR ARMCHAIRS *English, XVIII Century*
 Rounded spindle comb-back centred with a pierced bar splat; saddle seat on turned and splayed H-stretchered legs.

109. SHERATON MAHOGANY SPINDLE-TURNED BEDSIDE CABINET *English, XVIII Century*
 Square galleried top with two handgrips, fitted with cupboard, on slender turned spindle legs with X-stretcher. *Height 32½ inches; width 14 inches*
 From Arthur S. Vernay, Inc., New York

110. LOUIS XVI CARVED FRUITWOOD AND CANE ARMCHAIR *Italian, Late XVIII Century*
 Caned oval back, molded square tapered legs and curved arms. Seat recovered in tan floral chintz.

111. LOUIS XVI ACAJOU AND MARBLE GUÉRIDON
 Circular top of white marble with fretted bronze gallery, on mahogany fluted pillar and splayed tripod. *Height 29 inches; diameter 13 inches*

112. SHERATON MAHOGANY SPINDLE-LEG SIDE TABLE *English, XVIII Century*
 Galleried oblong top with incurved front, supported on four turned spindle legs and stretchers. *Height 29 inches; width 29 inches*

113. WILLIAM AND MARY TURNED ELMWOOD BURGOMASTER CHAIR *English, Late XVII Century*
 Tub-shaped chair, with caned circular seat and three caned oval splats in the half-round back; turned baluster posts and supports and spindled cross stretchers.



[NUMBER 114]

SPINACH JADE INCENSE BURNER: NUMBER 46

250- 114. CHIPPENDALE CARVED MAHOGANY CARD TABLE *English, XVIII Century*
Boldly serpentine oblong top hinged and lined with green baize, the edge carved with a chain of cabochon bosses; plain frieze beautifully finished with a miniature molding matching the carved edge; on straight canalated and chamfered legs also edged with a carved chain of tiny cabochons. Very fine patina. *Height 29 inches; length 35 inches*
From Arthur S. Vernay, Inc., New York

[See illustration]

32¹² 115. REGENCY INLAID MAHOGANY OCCASIONAL TABLE *Irish(?) , circa 1810*
Oblong box top with fitted frame, on four columnar supports with curved stretchers.
Height 28½ inches; width 18½ inches



[NUMBER 116]

116. CHIPPENDALE CARVED MAHOGANY UPHOLSTERED ARMCHAIR IN GREEN DAMASK
Irish, XVIII Century

Shaped back, seat and armpads in light green satin damask with floral design, trimmed with brass nails; the voluted arms, cabriole front legs and rear posts are richly carved with cabochons and leafage.

[See illustration]

117. SHERATON INLAID MAHOGANY WORK TABLE *English, Late XVIII Century*

Oval hinged top opening to compartment lined with old Genoese crimson velvet, on slender tapering square legs with turned and blocked X-stretcher. Inlaid with stringing, and banded.
Height 28½ inches; width 17½ inches

118. GEORGE II CARVED MAHOGANY ARMCHAIR *English, XVIII Century*

Open back with pierced and carved splat in the Gothic taste; slightly voluted and tapered arms, angular cabriole front legs with club feet; slip seat in green silk damask.



[NUMBER 119]

K'ANG HSI APPLE RED BOTTLE: NUMBER 16

200- 119. SHERATON INLAID SATINWOOD PEMBROKE TABLE *English, XVIII Century*
Oblong top with two rounded drop leaves, the frieze with single end drawer having ring handles; square tapering legs. The top and drawer-front finished with bandings of mahogany, the knees inlaid with small lozenge motives. Rich golden patina.

Height 27 inches; length open 39½ inches

From Arthur S. Vernay, Inc., New York

[See illustration]

15 120. DIRECTOIRE CARVED WALNUT SIDE CHAIR *Italian, circa 1800*
Open square back with interlaced strapwork splat; seat in tan floral chintz; square molded and tapering legs.



[NUMBER 121]

[NUMBER 122]

121. CHIPPENDALE CARVED MAHOGANY PIECRUST TABLE *English, XVIII Century*
 Circular top with molded piecrust edge, on knopped and vase-turned support and acanthus-carved tripod terminating in voluted feet. Leg repaired.

Height, 25 inches; diameter, 20 inches

From Arthur S. Vernay, Inc., New York

[See illustration]

122. CHIPPENDALE FINELY CARVED MAHOGANY TRIPOD TABLE

English, XVIII Century

Circular dish top, on round support carved with two tiers of Gothic niches on a cup-turned knob with a collar of acanthus leaves; on leaf-carved arched tripod ending in voluted feet. Good patina.

Height, 27½ inches; diameter, 26 inches

From Arthur S. Vernay, Inc., New York

[See illustration]

123. LOUIS XVI CARVED WALNUT AND BROWN LEATHER FAUTEUIL DE BUREAU
French, XVIII Century

130- Horseshoe molded back with armpads and incurvate stop-fluted frontal supports; round fluted and tapering legs, two repaired at feet. Covered in old brown leather.

124. CHIPPENDALE CARVED MAHOGANY ARMCHAIR *English, XVIII Century*

100- Open back has undulating crest rail, pierced vasiform splat carved with leafage, C-scrolls and honeysuckle; voluted and tapered arms, plain square legs with stretchers. Slip seat in old gold satin damask.

125. GEORGIAN CARVED AND PARCEL-GILDED MAHOGANY WALL MIRROR

40- Upright beveled mirror, surrounded by a shaped frame with borders of carved and gilded leafage and cartouches; embellished with carved and gilded shell ornaments and foliations, and crested by voluted pediment centred with a gadrooned urn.

Height 58 inches; width 30 inches

126. YEW AND ELM WINDSOR ARMCHAIR *English, XVIII Century*

50- Hoop back with three pierced splats, each centred with a turned roundel, the curved arms supported on similar subsidiary splats; saddle seat, turned and splayed H-stretched legs. From Arthur S. Vernay, Inc., New York

127. GEORGE II CARVED WALNUT WALL MIRROR *English, XVIII Century*

70- Upright molded frame, with fret-scolled and valanced base and elaborate arched and scrolled crown ornamented with scrolling stems of rosettes and husks.

Height 38 inches; width 20 inches

128. PAIR SHERATON CARVED MAHOGANY ARMCHAIRS *English, circa 1820*

110- With molded crowning rail crested by scrolled leafage, above a grooved bar slat; high boldly voluted arms on spherical supports, tapering incurved legs; slip seat in rose crimson silk floral damask.

129. LOUIS XVI INLAID WALNUT PETITE COMMODE

Southern French or Italian, XVIII Century

45- Small cabinet of two drawers, skirted with laurel festoons centring at the front a grotesque profile medallion; fluted and tapering round legs. Inlaid with panel bandings.

Height 32½ inches; width 16½ inches

130. PAIR QUEEN ANNE INLAID WALNUT LOWBOYS

130- Banded oblong top, knee-hole front with three drawers having engraved leaf-form brasses, cabriole legs.

Height 30 inches; length 32 inches



[NUMBER 131]

[NUMBER 132]

131. PAIR CHIPPENDALE RICHLY CARVED MAHOGANY AND PETIT POINT UPHOLSTERED ARMCHAIRS IN THE FRENCH TASTE *English, XVIII Century*
 Square back, seat and armpads all covered in modern *petit point* of good quality worked in gay colors with a parrot and bouquets of flowers in a fawn ground; recessive leaf-carved arm supports enriched with cabochons upon the junctions; valanced seat rail and cabriole legs carved in the *Régence* taste with shell motives and rococo foliage.

[See illustration of one]

132. CHIPPENDALE CARVED MAHOGANY UPHOLSTERED ARMCHAIR IN EIGHTEENTH CENTURY NEEDLEPOINT
 Square slightly arched back, seat and armpads, in antique floral needlepoint with olive brown ground, the back centring a beautiful *petit point* cartouche with figures of Cephalus and Procris, the nymph wounded by an arrow from her lover's bow; incurvate molded arm supports, square molded and stretchered legs. Frame of later date.

[See illustration]

45- 133. REGENCY INLAID MAHOGANY OCCASIONAL TABLE *English, circa 1810*
Octagonal crossbanded top, the edge carved with spirial gadroons; on four incurvate and flaring slender quadrangular supports, standing on stilted feet carved with collars of leafage. *Height 31 inches; width 22 inches*

42- 134. HEPPLEWHITE CARVED MAHOGANY AND NEEDLEPOINT ARMCHAIR
Open arched back with interlaced strapwork splat of vase form; open curved arms and supports; slip seat in floral needlepoint, on stretchered square legs.

60- 135. TURNED MAHOGANY SPIDER-LEG TABLE *Georgian Style*
Oblong top with two drop leaves, on slender spindled legs with gates. *Height 23 inches; length open 24 inches*

250- 136. PAIR CHIPPENDALE CARVED MAHOGANY UPHOLSTERED ARMCHAIRS IN MUSTARD YELLOW BROCATELLE
Canted square back, seat and arms in antique silk brocatelle, paneled with baroque foliage and coronets, the mahogany curved arm supports and the square legs carved with tracery ornament. Have plain stretchers and canted rear legs.

30- 137. EARLY GEORGIAN MAHOGANY DRESSING MIRROR *English, XVIII Century*
Upright hinged glass bordered with rococo scrolling, formerly gilded, and standing on a box body with three convex-fronted small drawers; bracket feet. *Height 22¼ inches; width 15½ inches*

40- 138. TWO TURNED MAHOGANY TOWEL RACKS *Sheraton Style*
Each with three cross rails, trestle supports; one with urn finials. *Heights 47 and 45 inches; width 30 inches*

45- 139. SHERATON INLAID MAHOGANY OCCASIONAL TABLE *English, Early XIX Century*
Octagonal crossbanded top, single drawer with two rosette handles, square tapering legs inlaid with stringing. *Height 28½ inches; width 17 inches*
From Schmitt Bros., Inc., New York

50- 140. ADAM CARVED MAHOGANY CANED HUNTING CHAIR *English, XVIII Century*
Caned sides and square back surmounted by rosette-and-ribbon carved rails, square columnar frontal supports cupped in foliage; patera-carved front rail and dies, square tapering legs enriched with laurel pendants. Cane back and seat with yellow satin loose cushions.



[NUMBER 141]

141. CHIPPENDALE CARVED ROSEWOOD SERPENTINE-FRONT CHEST OF DRAWERS

Portuguese, XVIII Century

Oblong top with serpentine front containing two small and three long deeply paneled drawers with fine ormolu rustic bail handles; chamfered stiles with leaf-carved and scrolled brackets, on rocaille-carved feet.

Height 34 inches; length 52 inches

[See illustration]

142. GEORGIAN SPIRALLY TURNED WALNUT CANDLESTAND, MOUNTED AS LAMP

English, Early XVIII Century

Circular dish top on spiral column and bowl-turned round base. Fitted for electricity, with shade.

Height 46½ inches

From Arthur S. Vernay, Inc., New York

143. CARVED AND INLAID WALNUT BEDSIDE COMMODE

Italian, XVII-XVIII Century

15- Oblong hinged top, front cupboard paneled to simulate three drawers sketched with Mediterranean landscapes; on scroll supports carved with iris.

Height 34 inches; width 21 inches

144. ADAM CARVED AND PARCEL-GILDED MAHOGANY OVERMANTEL MIRROR

60- Triple mirror edged with gilded cabling, the mahogany border applied with a gilded gesso vase and husk festoons; leaf-and-tongue outer molding with outset corners. Small imperfection.

Height 26 inches; length 50 inches

From Smith & Watson, Inc., New York

145. SHERATON INLAID ROSEWOOD SPINDLE-LEGGED OCCASIONAL TABLE

English, Late XVIII Century

30- Narrow oblong top bordered with stringing, on two twin-spindle supports of trestle type with delicately turned feet.

Height 28 $\frac{1}{4}$ inches; width 20 $\frac{1}{4}$ inches

146. DIRECTOIRE CARVED, PAINTED AND GILDED WALL MIRROR

Southern French, Late XVIII Century

75- Rectangular frame in the architectural style carved with formal laurel sprays and honeysuckle, and crested with a two-handled vase and leaf vines. Painted light blue, white and gold.

Height 56 inches; width 31 inches

147. GEORGE III MAHOGANY TILTING-TOP TRIPOD TABLE *English, XVIII Century*

60- Circular dish top tilting on a baluster- and vase-turned support with cyma-curved tripod and snake feet.

Height 25 $\frac{1}{2}$ inches; diameter 18 $\frac{1}{2}$ inches

148. SHERATON DECORATED SATINWOOD CONSOLE TABLE

English, Late XVIII Century

75- Semi-oval top painted with a border of flowers, on two square tapering legs painted with floral pendants and supporting an undershelf.

Height 35 inches; width 31 inches

From Schmitt Bros., Inc., New York

149. HEPPLEWHITE MAHOGANY OVAL-BACK ARMCHAIR *English, XVIII Century*

50- Open oval back centred with a pierced vase splat of five members; bowed arms on incurvate supports, seat in green silk damask, square tapering and stretchered legs.

150. ADAM CARVED MAHOGANY SMALL SOFA IN OLD GOLD SILK REP

English, XVIII Century

170- Rectangular frame with reeded top rail, and swelling turned frontal supports cupped in a collar of plantain leaves; fluted rails, round tapering legs collared with deep flutings at the knees, and terminating in acorn feet. Covered in old gold silk rep.

Length 5 feet

151. QUEEN ANNE WALNUT AND PETIT POINT WING ARMCHAIR

English, Early XVIII Century

400- Deep back with wings, closed outscrolled sides and seat cushion, all covered in modern *petit point* of fine quality, depicting wooded landscapes with rustics and flocks of sheep, amid flowering plants; on cabriole front legs with small club feet.



[NUMBER 152]

152. ADAM-HEPPLEWHITE INLAID SATINWOOD CABINET *English, XVIII Century*
 Upright, with two glazed doors with traceried lattices, surmounted by a doubly down-curved cornice with tiny dentils, finished with four small leaf-carved urn finials; lower body with two drawers surmounting double cupboards, quartered and inlaid with oval medallions of thuyawood. The cupboards, frame and drawer-fronts all elegantly finished with mahogany crossbandings. Reconditioned; interior of cabinet painted off-white.

From Arthur S. Vernay, Inc., New York *Height 7 feet 3 inches; width 31 inches*

[See illustration]

153. HEPPLEWHITE MAHOGANY SERPENTINE-FRONT CARD TABLE

English, XVIII Century

70- Serpentine oblong top with outset corners, hinged and lined in green baize; on plain banded frieze and square tapering legs with spade feet, the rear legs hinged as support.

Height 29 inches; length 37½ inches

From Arthur S. Vernay, Inc., New York

100- 154. PAIR ELMWOOD WINDSOR ARMCHAIRS

English, XVIII Century

Horseshoe back pierced by spindles and a central splat supporting a rounded comb; saddle seat, turned flaring legs with H-stretcher.

From Arthur S. Vernay, Inc., New York

65- 155. ADAM-HEPPLEWHITE MAHOGANY SERPENTINE-FRONT CARD TABLE

English, XVIII Century

Serpentine oblong hinged top lined in green baize, the edge with a guilloche carving; on plain frieze with beaded edge, and round swelling and tapering fluted legs, the rear legs extending in a concertina movement.

Height 29 inches; length 34 inches

From Arthur S. Vernay, Inc., New York

95- 156. HEPPLEWHITE CARVED MAHOGANY ARMCHAIR IN THE FRENCH TASTE

English, XVIII Century

Cartouche-shaped leaf-carved back with small floral cresting, open arms with armpads on serpentine molded supports, flower-carved front rail rounding into cabriole legs carved with pendent husks. Back, seat, and armpads covered in light green twill.

85- 157. PAINTED AND PARCEL-GILDED OVAL WALL MIRROR *English, XVIII Century*

Plain oval frame painted gray, bordered with gilded moldings and nulling.

Height 52½ inches; width 42½ inches

115- 158. GEORGIAN FINELY CARVED AND GILDED WALL MIRROR

English(?), XVIII Century

Handsome cartouche-shaped mirror bordered with openwork baroque scrolls enriched with blossoms and leaf scrollings, and supporting baskets of flowers; with a cherub and drapery festoon at the base above a pendent scallop shell.

Height 5 feet 5 inches; width 46 inches

From Arthur S. Vernay, Inc., New York

[See illustration]



[NUMBER 158]

215-158A. GEORGIAN FINELY CARVED AND GILDED WALL MIRROR

English(?), XVIII Century

Companion to the preceding.

From Arthur S. Vernay, Inc., New York

775- 159. SHERATON MAHOGANY DRESSING WARDROBE *English, XVIII Century*
Upright with molded and dentil-inlaid cornice, three paneled doors opening to an interior reconditioned and fitted with sliding trays; below are two paneled cupboards flanking a nest of two small and three long drawers bordered with stringing and fitted with brass bail handles, the interiors of drawers relined. Fine golden patina.

Height 6 feet 11 inches; width 6 feet 7 inches

From Arthur S. Vernay, Inc., New York

[See illustration]

80- 160. HEPPLEWHITE INLAID MAHOGANY SERPENTINE-FRONT COMMODE
With paneled double cupboards surmounting two long drawers with circular brasses and ring handles, the top inlaid with a small patera; bracket feet. Plate glass cover.

Height 27½ inches; width 27 inches

100- 161. CARVED MAHOGANY CLAW-AND-BALL FOOT LIBRARY TABLE *Georgian Style*
Oblong top with spirally gadrooned edge, on plain frieze and cabriole legs carved with acanthus scrolls and a cartouche at the knees, and ending in claw and ball feet.

Height 31 inches; length 5 feet

From Smith & Watson, Inc., New York

90- 162. DECORATED LEATHER FOUR-FOLD SCREEN *Georgian Style*
Painted in colors and gilding with formal panels of flower vases draped with gilded canopies, upon black cartouches in a green ground; some tears.

Height 5 feet 10 inches; width 6 feet

75- 163. MAMMOTH BLACK AND GOLD LACQUER CHEST, BOUND IN BRASS *XVIII Century*
Decorated with East Indian landscapes with palaces and figures of elephants mounted by mahouts; ornamented with richly engraved brass lock plate, corners, and bands.

Height 30¾ inches; length 5 feet 3 inches

25- 164. MAHOGANY TOWEL RACK *Sheraton Style*
Reeded square uprights with acorn finials, supporting four crossbars, on arched base with stretcher.

Height 46½ inches; width 30 inches

15- 165. UPHOLSTERED EASY CHAIR IN GREEN DAMASK
Comfortable small overstuffed chair with seat cushion, in greenish blue damask, somewhat discolored.



[NUMBER 159]

32^{re} 166. PAIR SHERATON INLAID MAHOGANY ENCOIGNURES, WITH DRESSING MIRROR
Small quarter-round *encoignures* with two drawers, on square tapering legs with spade feet; arranged to support a large oval dressing mirror.
Height of encoignure 32 inches; width 25 inches; height of mirror 5 feet 6 inches

10- 167. LOUIS XVI CARVED AND LAQUÉ SUITE *Italian, XIX Century*
Comprising a three-back settee and two side chairs with pierced beaker splats, on round fluted and tapering legs; cane seats. Finished parchment and gold. [Lot.]
Length of settee 5 feet 9 inches

85- 168. PAIR EMPIRE MAHOGANY BEDSTEADS, FORMERLY BELONGING TO
JOSEPH BONAPARTE *Circa 1825*
Paneled boards surmounted by cylindrical crowning rail and flanked by a round column with ormolu cap. With springs and mattresses.
Height 42 inches; widths 48 and 54½ inches

Note: These bedsteads were purchased at the Joseph Bonaparte sale at Bordentown, N. J. in 1845.

Collection of Mrs. Franklin Bartell

Collection of Jordan L. Mott, New York, 1921

25- 169. YEW AND ELM WINDSOR ARMCHAIR *English, XVIII Century*
Horseshoe back pierced by spindles centring a perforated vasiform splat, supporting a comb; saddle seat, on turned stretched legs.
From Arthur S. Vernay, Inc., New York

ANTIQUÉ CHINESE RUGS

The Chinese rugs in this section of the catalogue were purchased from S. & G. Gump Co. of San Francisco.

55- 170. CHINESE RUG *Chia Ch'ing*
Fawn ground with tiny red floral diaper and centred with a small bird medallion; fawn border patterned with roundels.
4 feet 10 inches x 2 feet 6 inches

50- 171. CHINESE RUG *Ch'ien Lung*
Woven with five floral medallions amid scattered sprigs, in light and dark blue, yellow and white, in a rosy tan ground; golden yellow peony border with pearl inner guard.
6 feet 8 inches x 5 feet

65- 172. CHINESE RUG *Ch'ien Lung*
Woven with eight floral medallions amid scrolled stems of camellias in shades of blue, rose, yellow and ivory, in a deep blue field; fret and pearl borders. Some repairs.
8 feet 4 inches x 5 feet 2 inches



[NUMBER 173]

173. CHINESE MEDALLION RUG

Ch'ien Lung

Hexagonal field of *vicil* or patterned with a diaper design, with invected old rose circular medallion and spandrels patterned with stems of golden peonies and blue and white leafage; within a rose red peony border with inner guard of *lei wên* fret.

8 feet 5 inches x 5 feet 4 inches

[See illustration]



[NUMBER 174]

130 174. CHINESE PEONY RUG

Golden tan ground woven with an oval medallion of peonies and rockery surrounded by sprigs of peony blossoms and scrolling foliage in shades of blue, yellow, rose, and ivory; sapphire blue floral border with an inner guard of rose *lei wên* fret.

Ch'ien Lung

10 feet 6 inches x 6 feet 8 inches

[See illustration]



[NUMBER 175]

175. CHINESE CARPET

Ch'ien Lung

Tawny rose field with fretted peony stems at the corners and a circular medallion of peony frets amid rows of scattered sprigs of flowers, pomegranates, and jardinières of blossoms; woven in shades of blue, rose, buff, and ivory. Buff border of rose and white peonies with straggling blue leafage, the inner guards of *lei wên* fret and pearl motive, respectively. In superb condition.

14 feet 2 inches x 9 feet 8 inches

[See illustration]

176. CHINESE CARPET

300- Ivory field centred with a medallion formed of interlaced leaf scrollings in deep blue and maroon centring a cluster of russet leaves, the remainder of the field showing faintly delineated lotus and other floral ornament; narrow peony and border borders in colors of the field. 14 feet 6 inches x 12 feet 3 inches

177. TURKISH CARPET

135- Scarlet field woven with a bold design of huge lotus and leaf palmettes in blues, greens, yellows, and aubergine, linked up by a lattice of sparse green creepers, within a harmonizing border. 23 feet 8 inches x 16 feet

178. OUSHAK RUG

Circa 1830

90- Scarlet field woven with a bold design of huge leaf palmettes interspersed with branches of blossoms and Mongolian cloud banks, within narrow borders of sapphire blue and maroon. 11 feet 2 inches x 4 feet 5 inches

179. CHINESE RUNNER

K'ang Hsi

125- The field is buried beneath an allover design of large blossoms and scrolling foliage in shades of blue, yellow, old gold, and ivory, within a gray border of blue frets. Rare type. 19 feet 5 inches x 2 feet 9 inches

180. CHINESE RUG

Ch'ien Lung

17- Woven in shades of blue and white and touches of dark red, with a floral medallion amid scrolling stems, and a peony border, with tan ground. Worn. 6 feet x 4 feet 2 inches

DOMESTIC CARPETS

181. GRAY CHENILLE CARPET

70- Shaped at one end for fireplace. 16 feet 8 inches x 14 feet 6 inches

182. HENNA CHENILLE CARPET

110- In good condition. 19 feet 2 inches x 14 feet 9 inches

183. TOBACCO BROWN CHENILLE CARPET

110- In good condition. 20 feet 10 inches x 12 feet

184. BOIS DE ROSE HAND-TUFTED CARPET

110- Woven with a decorative frame border expanding at the corners into interlaced leaf scrollings and sprays of flowers in subdued colors. 15 feet 6 inches x 14 feet

[END OF FIRST SESSION]

\$ 17-757¹⁰

SECOND SESSION

Friday, April 9, 1943, at 2 p. m.

CATALOGUE NUMBERS 185 TO 353 INCLUSIVE

DRAWINGS

756- 185. WILLIAM PARSONS AS 'FORESIGHT' *Samuel de Wilde, British: 1747-1832*
At full-length, in fawn coat with rose waistcoat; standing in a declamatory attitude, leaning on a cane. Signed and dated 1794. *Watercolor: 9¼ x 6¼ inches*
Collection of Xavier Haas, New York, 1927
Exhibition of "Les Maitres Anglais", Paris, 1919, no. 262

12- 186. ESTATE OF JOSEPH BONAPARTE, BORDENTOWN, N. J. *A. Kollner, German: fl. 1880*
Officers, some mounted, and figures strolling on a wide lawn before a view of the mansion surrounded by trees. Signed and dated 1880. *Watercolor: 11½ x 13½ inches*

110- 187. LANDSCAPE WITH RUINS AND FIGURES *Hubert Robert, French: 1733-1808*
Dainty figures animating a landscape of ruins, with a broken column, an arch, and fallen masonry, a tree dominating the left foreground. Signed, and dated 1788. *Sepia wash: 7½ x 6½ inches*

15- 188. PORTRAIT OF A GENTLEMAN *Henry Edridge, A.R.A., British: 1769-1821*
Three-quarter-length standing figure of a young man, leaning against a pedestal, holding a hat and stick in his right hand. Landscape background. Signed and dated 1796. *Pencil and India wash: 7 x 5¼ inches*

180- 189. MRS MICHEL *Sir Thomas Lawrence, P.R.A., British: 1769-1830*
Head-and-shoulders portrait of a young woman, her head turned toward the observer as she glances to the left; wearing a black hat with white plumes and chin ruffle. *Watercolor: 5¼ x 4¼ inches*

35- 190. PORTRAIT OF A GIRL *Rev. Matthew William Peters, R.A., British: 1749-1814*
Waist-length figure of a girl asleep, her fair head leaning against the square back of a chair. Signed. *Oval, chalk: 10½ x 8½ inches*



[NUMBER 191]

191. RUSTIC LANDSCAPES WITH FIGURES: PAIR DRAWINGS

Julius Caesar Ibbetson, British: 1759-1817

200- Depicting rustic travelers halting in the shade of spreading trees, accompanied by animated figures of children and their pack animals and dogs. *Watercolor: 8¼ x 6½ inches*

[See illustration]

192. PORTRAITS OF MR CROSGILL AND CHARLES KYNOCK

George Dance, R.A., British: 1740-1825

30- Waist-length profile portraits to the left. Signed and dated May 18, 1795 and March 23, 1799. *Pencil: 10 x 7½ inches*

Collection of Charles Newton Robinson

Collection of Xavier Haas, New York, 1927

193. PORTRAITS OF MR BLAKE AND THE REV. B. BLACKER

George Dance, R.A., British: 1740-1825

25- Waist-length profile portraits to the left; complexions tinted in watercolor. One signed and dated Feby. 2d, 1794. *Pencil: 10 x 7½ inches*

Collection of Charles Newton Robinson

Collection of Xavier Haas, New York, 1927

Exhibition of "Les Maitres Anglais", Paris, 1919, no. 66 and 69

194. LANDSCAPE WITH FIGURES

Samuel Prout, British: 1783-1852

15- A shallow stream, with men building a thatched shed upon the far bank, and a woman holding a child standing nearby. Signed.

Watercolor: 10 x 13¼ inches

195. HENRY CRABB ROBINSON, ESQ.

John James Masquerier, British: 1778-1855

15- Bust portrait in profile to the left of a man wearing a light colored coat, black waistcoat, and high white collar. Inscribed below, *H. C. Robinson.*

Chalk on pinkish paper: 9¾ x 6¾ inches

Henry Crabb Robinson (1775-1867), correspondent for *The London Times*; founder of the Athenaeum Club and University College, London; prominent member of the Bar; friend of Lamb, Coleridge, Southey, and Wordsworth, especially the latter, whom he accompanied on tours. Known chiefly for his voluminous *Diary*, an invaluable light upon his times, and for the *Journals* of his travels.

Drawn in 1834

Collection of Baroness Burdett-Coutts, London

Collection of Xavier Haas, New York, 1927

Illustrated and recorded in R.R.M. See, *Masquerier and His Circle*, 1922, pp. 156 and 228, and pl. lii

196. HUNTING SCENES: FOUR WATERCOLOR DRAWINGS

Henry Alken, jr., British: 1810-1892

270- Depicting two huntsmen in buff coats taking jumps; one in a pink coat dismounting at a gate; and two riders falling after a jump. Vignette backgrounds of green countryside. All signed; one dated 1881.

Pencil and watercolor: 8¾ x 11¾ and 12¾ inches

197. MRS STRULL

George Woodley, British: fl. 1830

70- Three-quarter-length figure to half left of a young woman in a white décolleté gown. Signed and dated 1832.

Pencil and chalk on buff paper: 15½ x 11¾ inches

198. PORTRAIT OF A LADY

John Downman, A.R.A., British: 1750-1824

170- Waist-length figure of a young woman with full powdered coiffure, wearing a white frock with pale blue sash and bow. Signed with initial D, and dated 1793.

Crayon oval: 7¾ x 6¼ inches

199. PORTRAIT OF GEORGE STUBBS, R.A.

George Dance, R.A., British: 1740-1825

170- Waist-length profile portrait to the left. Signed and dated Feb. 22, 1794.

Pencil on buff paper: 10 x 7¾ inches

200. PORTRAIT OF A CHILD

Samuel de Wilde, British: 1747-1832

125- A flaxen-haired little girl seated in profile to the left, sketching and wearing a white frock. Signed with initials.

Pencil and watercolor: 10¾ x 8 inches



[NUMBER 201]

65- 201. MRS ISABELLA HUNTER

John Downman, R.A., British: 1750-1824

Graceful half-length figure to half right of a young woman in flowing white gown, leaning her arms upon a pedestal as she holds a dove. Landscape background. Signed and dated 1782.

Oval crayon: 11¼ x 9 inches

Note: The sitter was identified by Mr Algernon Smith and Mr William Roberts.

From the Hosgood Collection, Bristol

[See illustration]

75 202. TWO DRAWINGS

Dante Gabriel Rossetti, British: 1828-1882

Maidens reclining in a group and strolling in the background; and a maiden playing a violin, beside another seated handling flowers.

Pencil: 11½ x 9½ inches

203. ARRANGEMENT OF FRUIT

French School, Early XIX Century

370- Paper pressed and painted with fruit upon a table top, brightened with a gold chalice and enlivened with a bird and butterfly. *Gouache: 9 x 11¼ inches*

204. PAIR CHINESE DECORATIVE WATERCOLOR DRAWINGS

20- Depicting pairs of birds before flowering plants in vivid colors.

15 x 22 inches

205. THREE CHINESE DECORATIVE WATERCOLOR DRAWINGS

45- Companions to the preceding.

15 x 22 inches

206. THREE WATERCOLOR CARICATURES

70- Figures of German police in action with short swords, two in colors, signed G. Brandt; a giant and a serenader, signed Arnold; and an Indian with a battle axe vigorously riking at a crouching nude, signed Pinetti, '03. [Lot.]

Grosse Berliner Kunstausstellung, 1912

ENGLISH AND FRENCH COLOR PRINTS

15- 207. MEZZOTINT PRINTED IN COLORS

S. Arlent-Edwards, after Lawrence

Miranda. Small folio; signed artist's proof, good impression. Gilded frame.

15- 208. MEZZOTINT PRINTED IN COLORS

Alfred J. Skrimshire, after Gainsborough

Mrs. Robinson as Perdita. Folio, fine impression; signed artist's proof. Framed.

10- 209. TWO MEZZOTINTS PRINTED IN COLORS

Mrs. Carnac, by Alfred Skrimshire after Lawrence; and Mme de Blaives, by Will Henderson after Nattier. Medium folios, good impressions; signed artists' proofs. Framed.

20- 210. MEZZOTINT PRINTED IN COLORS

Alfred J. Skrimshire, after Gainsborough

Portrait of a Lady. Folio, fine impression; signed artist's proof. Framed.

20- 211. PAIR MEZZOTINTS PRINTED IN COLORS

H. Sedcote, after Gainsborough

Mrs. Lowndes, and Mrs. Mears. Folios, fine impressions; signed artist's proofs. One slightly foxed in margins. Framed.

25- 212. TWO MEZZOTINTS PRINTED IN COLORS

The Calmady Children, by Alfred Skrimshire after Lawrence; and The Age of Innocence, by P. H. Martindale after Reynolds. Medium folios, fine impressions; signed artists' proofs. Framed.

213. AQUATINT PRINTED IN COLORS

Descourtis, after Taunay

70- Le Tambourin. Small folio; fine proof with full inscription. Antique gilded frame.
From M. Knoedler & Co., Inc., New York

160- 214. AQUATINT PRINTED IN COLORS

P. L. Debu-court, 1789

La Noce au Château (1789). Small folio; fine early proof printed in colors, with full inscription. Antique gilded frame.
From M. Knoedler & Co., Inc., New York

65- 215. STIPPLE ENGRAVING PRINTED IN COLORS

W. Ward

Louisa. Small folio; very fine proof with inscription; full margins. Gilded frame.
From M. Knoedler & Co., Inc., New York

70- 216. COACHING AQUATINT PRINTED IN COLORS

F. Rosenberg, after C. Newhouse

Opposition Coaches at Speed. Medium folio; fine impression with inscription. Framed.

80- 217. AQUATINT PRINTED IN COLORS

Descourtis, after Taunay

Foire de Village. Medium folio; fine impression with inscription. Portalis and Beraldi No. 1a. Gilded frame.
From M. Knoedler & Co., Inc., New York

80- 218. COACHING AQUATINT PRINTED IN COLORS

H. Alken, after G. Tregear

The Eagle Paris and Dover Coach. Medium folio; fine impression with inscription. Framed.

160- 219. AQUATINT PRINTED IN COLORS

P. L. Debu-court, 1786

Le Menuet de la Mariée (1786). Medium folio; fine impression with inscription. Portalis and Beraldi No. 8a. Gilded frame.
From M. Knoedler & Co., Inc., New York

150- 220. AQUATINT PRINTED IN COLORS

P. L. Debu-court

Le Compliment ou la Matinée du Jour de l'An. Medium folio; fine impression with inscription. Portalis and Beraldi No. 2f. Gilded frame.
From M. Knoedler & Co., Inc., New York



[NUMBER 221]

221. IMPORTANT AQUATINT PRINTED IN COLORS *François Janinet, after C. Houin*
 Nina, ou La Folie Par Amour. Medium folio; very fine proof in the first state before all
 letters, but with the engraver's name traced with needle only. Portalis and Beraldi No.
 35. Gilded frame.

From the Halsey Collection, No. 482

Collection of William Salomon, New York, 1923

From M. Knoedler & Co., Inc., New York

[See illustration]

150- 222. AQUATINT PRINTED IN COLORS *P. L. Debu-court, 1788*
 Les Bouquets, ou La Fête de la Grande Maman (1788). Medium folio; fine early
 impression with inscription. Portalis and Beraldi No. 2a. Gilded frame.
 From M. Knoedler & Co., Inc., New York

300- 223. AQUATINT PRINTED IN COLORS *P. L. Debu-court, 1787*
 Heur et Malheur, ou la Cruche Cassée (1787). Medium folio; fine early impression
 with inscription. Portalis and Beraldi No. 5. Gilded frame.
 From M. Knoedler & Co., Inc., New York

75- 224. STIPPLE ENGRAVING PRINTED IN COLORS *W. Ward, after J. R. Smith*
 Thoughts on Matrimony. Small folio, very fine proof with inscription, full margins.
 Gilded frame.
 From M. Knoedler & Co., Inc., New York

95- 225. COLORED MEZZOTINT ENGRAVING *William Ward, after George Morland*
 The Thatcher. Large folio; good impression with inscription. Gilded frame.

95- 226. COLORED MEZZOTINT ENGRAVING *J. R. Smith, after George Morland*
 The Horse Feeder. Large folio; good impression with inscription. Gilded frame.

90- 227. SIX COLORED FOX-HUNTING AQUATINTS *Sutherland, after H. Alken*
 Fox-hunting, a series of six scenes. Small folios; aquatint engravings mostly colored by
 hand; good impressions with full inscriptions. Gilded frames.

190- 228. TWENTY-FOUR LITHOGRAPHS PRINTED IN COLORS *T. Shotton Boys*
 Series of twenty-four views of principal buildings, streets, bridges, and parks of London.
 Medium folios. Framed. Together with a landscape etching printed in colors, by
 Houdard, and a mezzotint portrait, by Pichler. [Lot.]

75- 229. FIVE ENGRAVINGS *C. Schutz and J. Ziegler*
 Vue du Prater vers la Ville; La Caserne de Grenadiers; Church of St. Stephens (in-
 terior); Dans le Jardin . . . de Schoenbrunn, all in colors; View near Bordentown.
 Medium and small folios, all impressions with inscriptions. Framed. [Lot.]

ENGLISH XVIII CENTURY FURNITURE
 AND DECORATIONS

5- 230. OLD BRISTOL APPLE GREEN GLASS PERFUME BOTTLE
 Globular flask with small mouth. *Height 2¾ inches*
 From Arthur S. Vernay, Inc., New York

45- 231. TWO GEORGE III GILDED SILVER WATERMAN'S BADGES *English, circa 1810*
 Crown and garter surrounding a royal coat of arms on printed paper, with a pendant
 in the form of a greyhound. Scarce.

227- 232. DAVENPORT DECORATED PORCELAIN INKWELL Circa 1800
 Cylindrical inkpot in white porcelain painted with sprigs of roses and forget-me-nots,
 within gilded rims. Diameter 4 $\frac{1}{4}$ inches

From Arthur S. Vernay, Inc., New York

15- 233. DRESDEN PAINTED ENAMEL VANITY BOX Circa 1770
 In the shape of a serpentine commode delicately painted with landscapes, the cover with
 scattered *articles de toilette*, the interior of the lid with three ladies; age cracks.
Length 4 $\frac{3}{4}$ inches

15- 234. WEDGWOOD BLACK BASALT FRUIT BOWL Circa 1800
 Deep round bowl paneled with strap fluting and with border of herringbone ornament.
Diameter 8 $\frac{1}{4}$ inches

170- 235. INLAID MAHOGANY MANTEL CLOCK English, circa 1820
 Quadrangular arched case with large circular dial. Height 7 $\frac{1}{2}$ inches

30- 236. TWO GLASS FRUIT BOWLS
 Baccarat scalloped cut glass compotier on knopped stem and hexafoil foot; and a Bristol
 green glass fruit bowl with opaline foot. Diameters 10 and 12 inches

15- 237. PAIR ORIENTAL LOWESTOFT PORCELAIN ARMORIAL PLATES XVIII Century
 Painted in colors and gilding with the arms, coronet, and supporters of an earl, within a
 garland of gilded grapevines, the border with four magenta cartouches of landscapes and
 birds perched upon flowering branches. Diameter 9 inches

200- 238. FLIGHT, BARR & BARR WORCESTER PORCELAIN PART SERVICE Circa 1815
 Comprising a pair of oval chop dishes, covered muffin dish, twelve plates, thirteen teacups
 and saucers. Painted with sprigs of naturalistic garden flowers. [Lot.]
 From Arthur S. Vernay, Inc., New York

15- 239. CROWN DERBY DECORATED PORCELAIN TWO-HANDLED VASE Circa 1800
 Ovoid vase with incurvate neck and two leaved scroll handles, square base. Decorated
 with an Imari floral pattern in royal blue, rose and gilding. Height 9 inches

[See illustration]

100- 240. DERBYSHIRE SPAR COMPOTIER OF IMPORTANT SIZE English, XVIII Century
 A nine-and-a-half-inch circular bowl in beautifully figured translucent 'Blue John',
 standing on a separate round base of deep purple tone. Diameter 9 $\frac{5}{8}$ inches

[See illustration]

Illustration of number 239 appears on page 55; of number 240 on the following page



[241]

[240]

[241]

241. PAIR ADAM DERBYSHIRE SPAR URN ORNAMENTS *English, XVIII Century*
 In the form of a classic ovoid urn on molded square plinth, in sparkling shaded brown mineral. *Height 11½ inches*

[See illustration]

90- 242. INLAID MAHOGANY MANTEL CLOCK *English, circa 1830*
 Charming small Gothic-form clock, the front inlaid with formalized foliations. *Height 8¾ inches*

95- 243. PAIR BILSTED ENAMEL SPIRAL CANDLESTICKS *Circa 1770*
 Spirally twisted stem with square base and fluted *bobèche*, painted with scattered sprigs of delicate spring blossoms in colors on a white ground. *Height 10 inches*

40- 244. PAIR OLD BRISTOL CERULEAN BLUE GLASS BOTTLES *Circa 1770*
 Cylindrical bottle with original stopper, in flocculent semi-opaque light blue glass. *Height 10¾ inches*

From Arthur S. Vernay, Inc., New York

100- 245. WORCESTER DECORATED PORCELAIN TEA SERVICE *Circa 1770*
 Comprising six fluted cups and saucers, milk pitcher, and hexagonal dish. Painted with sprays of colorful blossoms with green leafage, the *gros bleu* rim with gilded leafage. Crescent. [Lot.]

From Arthur S. Vernay, Inc., New York

246. PAIR SANDWICH MOLDED AND BLOWN GLASS LAMPS
 25- Faceted globe reservoir on baluster stem and square foot; fitted for electricity, with shade.
Height 16½ inches
247. PAIR SANDWICH MOLDED AND BLOWN GLASS LAMPS
 30- Globular reservoir on knopped shaft and square foot; fitted for electricity, with shade.
Height 16 inches
248. PAIR SMALL GEORGIAN BRASS ANDIRONS
 17- With vase finial, on low square plinth.
Height 9¼ inches
249. PAIR DECORATED PORCELAIN FLUTED URNS
 25- Ovoid urn with rose and white flutings, collared with painted garlands of roses.
Chelsea Style
Height 10½ inches
250. SIX DELFT BLUE AND WHITE PLATES
 60- Various sketched with rude landscapes and floral designs in the Chinese taste.
XVIII Century
Diameters about 14 inches
251. FOUR DELFT BLUE AND WHITE PLATES
 36- Three sketched with floral designs; and a 'peacock' plate. [Lot.]
XVIII Century
Diameters about 13½ inches
252. THREE FLIGHT, BARR & BARR WORCESTER PORCELAIN PLATTERS
 10- Graduated set, with gadrooned and valanced rims, painted with an Imari floral design of nosegays in blue, red, and gilding. [Lot.]
Circa 1820
Lengths 18 to 22½ inches
253. PAIR FLIGHT, BARR & BARR WORCESTER PORCELAIN PLATTERS
 37- Design of the preceding. [Lot.]
Circa 1820
Length 20 inches
254. CHINESE CARVED AND GILDED STATUETTE, MOUNTED AS LAMP
 10- Dancing figure of a laughing man holding a rope of beads. Fitted for electricity, with shade.
XVIII Century
Height 19 inches
255. STAINED AND PAINTED GLASS MEDALLION
 20- Painted with a bust portrait of Queen Catherine of Aragon, before a ruby background; encircled by a caption with date 1519, probably apocryphal.
English, dated 1519
Diameter 11½ inches
256. HAMMERED COPPER MILK PITCHER
 17- With loop handle and animal spout.
Dutch, XVIII Century
Height 18 inches
257. DECORATED WORK BOX
 25- Painted with butterflies and naturalistic garden flowers, the cover with a rural scene; interior refitted as humidior.
English, circa 1820
Length 10¾ inches
258. ALABASTER VASE, MOUNTED AS LAMP
 70- Ovoid vase on square plaster base. Fitted for electricity, with shade. Small repairs.
Italian, XVIII Century
Height 23½ inches

- 30- 259. PAIR GEORGIAN BRASS ANDIRONS *English, XVIII Century*
Ball-and-steeple form, with spurred arch foot. *Height 21 inches*
- 47¹⁰ 260. MEISSEN DECORATED PORCELAIN VASE, MOUNTED AS LAMP *Circa 1750*
Inverted pear-shaped vase in white porcelain, encrusted in high relief with spreading stems of flowers and fruits, amid which are a caterpillar, grasshopper, and butterflies. Fitted for electricity, with shade. *Height 16½ inches*
- 27¹⁰ 261. ROUGE ROYALE MARBLE BIRD BATH *Italian(?) , XVIII Century*
Circular bowl on low stem, flaring into a molded square lip. *Length 13 inches*
- 23¹⁰ 262. ADAM DECORATED TOLE VASE, MOUNTED AS LAMP
Painted with a medallion of nymphs *en grisaille* and festoons of flowers and drapery on a black ground. Fitted for electricity, with shade. *Height 22½ inches*
- 37¹² 263. PAIR CAROLEAN BRASS BALL-TOP ANDIRONS
Sphere with turned finial, on scrolled support centred with a cherub mask. *Height 22 inches*
- 70- 264. SHERATON INLAID MAHOGANY BALLOON CLOCK *Hugh Riach, London*
Shaped case inlaid with borders of black and yellow cabling; brass vase finial. *Height 17¼ inches*
- 27¹⁰ 265. BLUE AND WHITE PORCELAIN BOTTLE, MOUNTED AS LAMP *K'ang Hsi*
Rudely painted with figures of camp followers in a rocky landscape, the tall neck with foliations. Fitted for electricity, with shade. *Height 21½ inches*
- 40- 266. PAIR GEORGIAN BRASS ACORN-TOP ANDIRONS *English, XVIII Century*
With acorn finial, on hexagonal plinth and spurred arch foot. *Height 19½ inches*
- 42¹⁰ 267. WEDGWOOD GREEN AND WHITE JASPER VASE, MOUNTED AS LAMP
Semi-ovoid vase modeled with a frieze of dancing nymphs. Fitted for electricity, with shade. *Height 17 inches*
- 130- 267A. PAIR GEORGE III TERRESTRIAL AND CELESTIAL GLOBES ON MAHOGANY STANDS *J. & W. Cary, London, circa 1810-20*
Twelve-inch globes with brass meridian circle, on graceful snake-foot tripod stand fitted with compass. *Height 25 inches; width 16½ inches*
From Arthur S. Vernay, Inc., New York
- 55- 268. WATERFORD CUT GLASS LUSTRE CANDELABRUM *Irish, XVIII Century*
Three-light candelabrum hung with faceted tear lustres, on balustered stem; with two side cornucopia-form *bobêches*, joined to a central hooked arm by two lustre festoons. Base chipped. *Height 21 inches*
- 32¹⁰ 269. PAIR GEORGIAN BRASS-TOP ANDIRONS, WITH STEEL STAND OF FIRE TOOLS
Iron shaft supporting a curved goose-neck stem with brass melon-lobed finial. Stand with steel poker, shovel, and tongs having faceted steel and bronze decorative finials. [Lot.] *Height of andirons 26 inches*

270. CHINESE CLOISONNÉ ENAMEL FISH BOWL

K'ang Hsi

145- Large hemispherical bowl, decorated with green *Fu* lions amid scrolling red lotus tendrils, together with a coiled green dragon, in a turquoise blue ground. *Diameter 24½ inches*

271. ORMOLU GLAZED HEXAGONAL HALL LANTERN

English, XVIII Century

140- With glazed sides, the door etched with a coroneted monogram GB; rimmed with ormolu embellished with a leaved mascaron and rams' heads, and a coronet top. Together with a pair of iron log rests fronted with brass vases of flowers (one imperfect). [Lot.]

Height 29 inches

272. CAROLEAN BRASS HEARTH GARNITURE

55- Pair of brass melon-top andirons with quatrefoil mask finial; and engraved brass coal basket dated 1639. Together with Georgian shovel, poker, and tongs with faceted mushroom tops. [Lot.]

Height of andirons 22 inches

273. GEORGE III MAHOGANY LETTER PRESS

English, XVIII Century

140- With two small drawers.

Height 27½ inches; width 16 inches

From Arthur S. Vernay, Inc., New York

273A. GEORGE III MAHOGANY BRACKET CLOCK

Richd. Chater, London, circa 1800

45- Quadrangular domed case with brass bail carrying handle and fretted spandrels; plain white painted dial with maker's name.

Height 20 inches

From Arthur S. Vernay, Inc., New York

274. ELMWOOD WINDSOR ARMCHAIR

English, XVIII Century

35- Horseshoe back pierced by eight spindles, supporting a high comb; saddle seat, on round legs with bobbin-turned H-stretcher.

From Arthur S. Vernay, Inc., New York

275. SHERATON INLAID MAHOGANY WORK TABLE WITH DETACHABLE TOP

85- Containing a kidney-shaped lift-off upper section with a carrying handle and three small drawers; resting on a serpentine table with pull-out writing slide and concave-fronted drawer, and a silk work basket, on four slender legs with kidney-shaped undershelf.

Height 40 inches; width 17½ inches

276. SHERATON INLAID MAHOGANY WORK TABLE WITH DETACHABLE TOP

85- Very similar in design to the preceding, but without writing slide.

Height 41 inches; width 17¼ inches

277. ADAM MAHOGANY DISH-TOP TRIPOD CANDLESTAND

30- Circular dish top on reeded and vase-turned support and three high incurvate flaring legs.

Height 26 inches; diameter 15¾ inches

From Schmitt Bros., Inc., New York

278. SHERATON MAHOGANY OCCASIONAL TABLE

English, Late XVIII Century

80- Rounded oblong top fitted with single drawer having brass rosette handles; slender square tapering and flaring legs joined by a saltire stretcher.

Height 29½ inches; width 18½ inches



[NUMBER 279]

279. PAIR SHERATON DECORATED SATINWOOD POLE SCREENS

English, Late XVIII Century

140- Oval panel worked with a chenille-embroidered floral nosegay, supported on a round pole with fluted vase turning, and three slender flaring legs. Painted with leaf and husk ornament.

Height 58½ inches; width 18 inches

From Arthur S. Vernay, Inc., New York

[See illustration]



[NUMBER 281]

[NUMBER 280]

CROWN DERBY PORCELAIN VASE: NUMBER 239

280. CHIPPENDALE CARVED MAHOGANY WHATNOT *English, XVIII Century*
 With square top and undershelf enclosed by bamboo-turned moldings, the undershelf containing a frieze and single drawer fret-carved with leaf scrollings; on slender bamboo-turned supports with X-stretcher below. *Height 33½ inches; width 13 inches*

[See illustration]

281. PAIR CHIPPENDALE CARVED MAHOGANY SIDE CHAIRS *English, XVIII Century*
 Open fan-shaped back with rococo-carved bow-shaped top rail and handsome interlacing ribbon splat; slip seat in old gold rep, valanced rails and on chamfered square legs with stretchers.

[See illustration of one]

90-

180-



[NUMBER 283]

[NUMBER 282]

125- 282. CHIPPENDALE CARVED MAHOGANY AND GREEN SILK DAMASK
UPHOLSTERED ARMCHAIR *English, XVIII Century*
Square slightly arched back with broad seat and arm pads, covered in fine Spitalfields green silk damask, the fluted and incurvate arm supports terminating at the joint in a carved blossom and leaf; on cabriole front legs carved with leafage and rococo C-scrolls at the knees, and terminating in boldly voluted feet.

[See illustration]

145- 283. CHIPPENDALE CARVED MAHOGANY AND CRIMSON SILK DAMASK
UPHOLSTERED ARMCHAIR *English, XVIII Century*
Seat, square slightly arched back and arm pads covered in fine antique Spanish crimson silk damask, the open arms with incurvate supports carved with acanthus leaves and a scallop shell; on cabriole legs with bold acanthus volutes carved at the knees, and crisply executed ball-and-claw feet.

[See illustration]

30- 284. GEORGE III MAHOGANY CLAW-FOOT TOWEL RACK
Trestle frame with three rods, the legs terminating in paw feet.
Height 46 inches; width 30 inches
From Arthur S. Vernay, Inc., New York



[NUMBER 285]

285. CHIPPENDALE FINELY CARVED MAHOGANY CABRIOLE-LEG SILVER TABLE

English, XVIII Century

Shaped oblong top with a pierced and fretted gallery, upon a shallow molded frieze and four cabriole legs terminating in boldly voluted feet; crisply carved upon the knees with a cabochon motive upon a large pendant of leafage, surmounted by a scallop shell ornament in a sunken medallion. Light patina. *Height 29½ inches; length 37 inches*

[See illustration]

286. HEPPLEWHITE CARVED MAHOGANY ARMCHAIR IN THE FRENCH TASTE

English, XVIII Century

Open cartouche-shaped back with pierced five-fold beaker splat crested by a small scallop-shell motive; short open arms with armpads, on molded and sharply incurved frontal supports, molded cabriole legs with fan-carved knees. Seat and armpads in old brown leather trimmed with brass nails.

50- 287. LOUIS XV FRUITWOOD OCCASIONAL TABLE *French, XVIII Century*
 Provincial piece. With three drawers, beaded oblong top and slightly curved and tapered supports. *Height 26 inches; width 19 inches*

60- 288. SHERATON INLAID MAHOGANY CARD TABLE *English, XVIII Century*
 Hinged and folding top lined with maroon baize; top and square tapered legs banded with satinwood and inlaid with fan medallions. *Height 28 inches; diameter 36 inches*

30- 289. QUEEN ANNE PARCEL-GILDED WALNUT WALL MIRROR *English, Early XVIII Century*
 Double-arched narrow frame of walnut veneer with gilded borders; contains beveled glass plate. *Height 31 inches; width 30 inches*

175- 290. CHIPPENDALE CARVED MAHOGANY DISH-TOP TABLE *English, XVIII Century*
 Tilting circular top of crotched mahogany, with molded edge, supported on bulbous pillar carved with formal honeysuckle and fluting, and springing from a cabriole tripod with club feet. *Height 28 inches; diameter 26 inches*

45- 291. SHERATON DECORATED MAHOGANY AND SYCAMORE BOUDOIR DESK *English, circa 1800*
 Banded slant top decorated with a sycamore oval floral medallion, hinged and opening to interior fitted for writing; slender tapering square legs with X-stretcher. *Height 32½ inches; width 13 inches*

55- 292. GEORGIAN CARVED MAHOGANY AND NEEDLEPOINT CABRIOLE-LEG ARMCHAIR *English, XVIII Century*
 Open back with beaker splat, open serpentine arms on scrolled supports; slip seat in old floral needlepoint, on stretchered cabriole legs.

115- 293. PAIR HEPPLEWHITE INLAID MAHOGANY WINDOW SEATS *English, XVIII Century*
 With loose seat cushion in tan floral chintz and open scrolled arm rests; square tapering legs with patera-carved knees. *Length 41 inches*

85- 294. HEPPLEWHITE CARVED MAHOGANY UPHOLSTERED ARMCHAIR
 IN THE FRENCH TASTE *English, XVIII Century*
 Rounded back, shaped seat and armpads in antique crimson damask trimmed with bronze nails. Has mahogany molded and voluted arm terminals, and cabriole legs, the front ones carved with leafage and shells, and terminating in scrolled feet.



[NUMBER 295]

295. QUEEN ANNE INLAID AMBOYNA CHEST OF DRAWERS

English, Early XVIII Century

Oblong top, the front with two small and two long drawers veneered with amboyne bordered with bandings, having pierced brass escutcheons and drop handles; bracket feet.

Rich deep golden patina.

Height 35 inches; length 41½ inches

From Schmitt Bros. Inc., New York

[See illustration]

296. GEORGE II CARVED AND PARCEL-GILDED WALNUT WALL MIRROR

English, XVIII Century

Upright, with triangular pediment bordered with carved and gilded leafage and centring a gilded scallop-shell ornament; the valanced skirt scrolls into projecting sides and is ornamented with carved and gilded leafage and blossoms, centring a shell.

Height 51 inches; width 32 inches



[NUMBER 297]

297. SET OF SIX HEPPLEWHITE CARVED MAHOGANY SIDE CHAIRS

English, XVIII Century

360- Open molded back with quintuple beaker-form splat carved with an anthemion with husk pendants; seat in brown striped wool velours, on chamfered and molded square legs with stretchers.

From Arthur S. Vernay, Inc., New York

[See illustration of two]

100-298. SHERATON DECORATED AND LACQUERED BOUDOIR TABLE *English, circa 1810*

Galleried top with lacquer panel quaintly decorated with European figures in a Chinese garden landscape; two drawers painted with trailing floral ornament; slender square legs with undershelf painted to simulate Portor marble. *Height 32 inches; width 18½ inches*



[NUMBER 299]

BATTERSEA ENAMEL CANDLESTICKS: NUMBER 399

299. SHERATON INLAID THUYAWOOD CYLINDER DESK *English, XVIII Century*

Fitted with a long frieze drawer above a rolltop desk operating with the pull-out top drawer, and opening to small drawers, pigeonholes, and a leather-covered slide disclosing well; below is a long drawer, on tapering square legs. Paneled with thuyawood and banded in mahogany. Reconditioned. *Height 42 inches; width 33½ inches*

From Schmitt Bros., Inc., New York

[See illustration]

300. GEORGIAN CARVED MAHOGANY AND OAK 'BARBER'S' CHAIR

English, XVIII Century

Horseshoe back with two pierced beaker splats supporting a fan-shaped comb with a third splat; slip seat in old black leather, cabriole front leg and three cylindrical rear legs.



[NUMBER 301]

301. PAIR HEPPLEWHITE CARVED MAHOGANY AND GREEN VELVET
UPHOLSTERED ARMCHAIRS

English, XVIII Century

270- Shaped back, seat and arms in antique olive green silk velvet trimmed with bronze nails. The mahogany molded and voluted arm supports, the molded cabriole front legs carved with leafage and C-scrolls. Valanced seat frame carved with egg-and-dart motive.

[See illustration]

140- 302. SHERATON INLAID MAHOGANY AND THUYAWOOD DROP-LEAF TRIPOD TABLE

English, Early XIX Century

Octagonal banded top with two drop leaves and single drawer, on hexagonal column and cyma-curved tripod inlaid to simulate narrow flutings.

Height 27½ inches; width open 22 inches



[NUMBER 303]

303. CHIPPENDALE CARVED MAHOGANY AND GREEN SILK DAMASK LOVE SEAT

English, XVIII Century

Slightly arched oblong back, down seat cushion and armpads, covered in fine old Spitalfields apple green silk damask, the molded arm supports scrolling upwards into leafy volutes; on cabriole legs, all four of which are carved with leafy cabochon motives and terminating in lion-paw feet.

Length 46½ inches

[See illustration]

304. PAIR SHERATON MAHOGANY ARMCHAIRS

English, circa 1805

Reeded frame with high scrolled arms upon incurvate supports continuing into similarly incurved legs, the crowning bar bordered with reeding; the carved slat centred with a turned roundel. Slip seat in crimson silk floral damask.

305. CHINESE CHIPPENDALE CARVED AND GILDED WALL MIRROR

English, XVIII Century

170- Upright mirror with rusticated frame enriched with trailing branches at the sides and crested by a Chinese figure squatting upon a tabouret beneath a pagoda; at the base, two reversed C-scrolls. *Height 45½ inches; width 24 inches*

From Arthur S. Vernay, Inc., New York

[See illustration]

306. SHERATON DECORATED BEECHWOOD AND SATINWOOD CONSOLE TABLE

English, Late XVIII Century

210- Shaped top with inset quarter-round returns, veneered in satinwood and with painted border of flowers on a black ground; the frieze decorated with panels of foliage and a central group of amors painted *en camaïeu*. Round tapering legs set off with ring turnings. *Height 32 inches; length 53 inches*

From Schmitt Bros., Inc., New York

[See illustration]

307. GEORGE II CARVED MAHOGANY AND GREEN SILK DAMASK

80- UPHOLSTERED ARMCHAIR

Seat and square back covered in Spitalfields light green silk damask, open bowed and voluted arms on incurvate supports; on cabriole legs carved at the knees with scallop shells enclosed by leafage and ending in claw-and-ball feet.

308. SHERATON INLAID ROSEWOOD OCCASIONAL TABLE

English, circa 1800

50- Square banded top inlaid with a checker parquetry of various woods, on four splayed square legs with arched X-stretcher. *Height 27 inches; width 16 inches*

309. GEORGE II GILDED GESSO WALL MIRROR

75- Upright mirror bordered with a cove, molded with rosette and ribbon design, the scrolled and valanced apron centred with a scallop shell; ovolo-molded scroll pediment centred with a Baroque cartouche and embellished with leaf-scrollings molded in light relief.

Height 56½ inches; width 35 inches

310. GEORGE III MAHOGANY TILTING-TOP PIECRUST TABLE *English, XVIII Century*

145- Circular top with molded piecrust edge, tilting on a ring and bulb-turned support and plain cyma-curved tripod with snake feet. *Height 25 inches; diameter 21 inches*

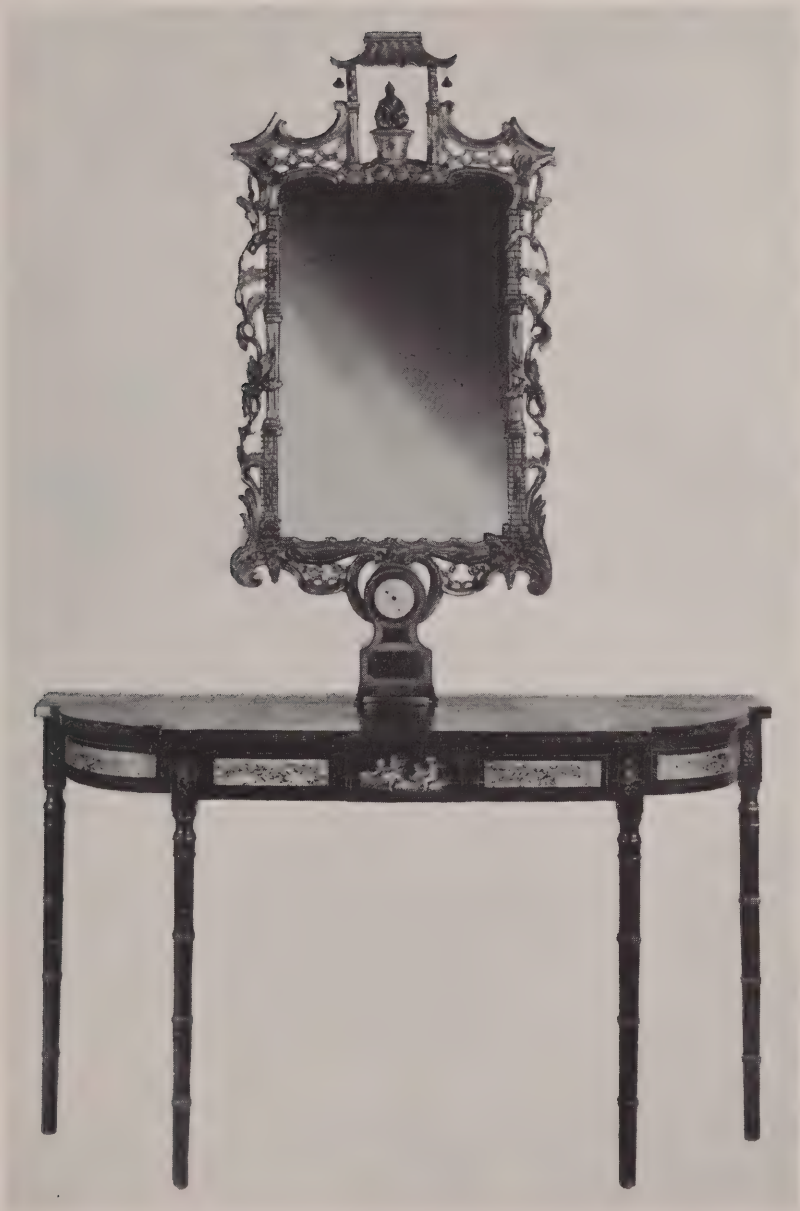
From Arthur S. Vernay, Inc., New York

311. GOTHIC CHIPPENDALE CARVED MAHOGANY AND BUFF SATIN

130- DAMASK ARMCHAIR

English, XVIII Century

Open slightly flaring back with pierced splat of Gothic tracery; open S-scrolled and voluted arms on shaped supports; slip seat in buff satin damask, on square chamfered and stretchered legs.



[NUMBERS 305 AND 306]

SHERATON BALLOON CLOCK : NUMBER 416

312. CARVED AND GILDED WALL MIRROR *Italian, XVIII Century*

50- Upright, with husk-and-pearl border surmounted by a leaf- and rococo-scrolled ornament in the Chippendale taste and two urns; on leaf-scrolled bracket supports.

Height 55½ inches; width 26½ inches

90- 313. CHIPPENDALE CARVED MAHOGANY AND CRIMSON SILK DAMASK ARMCHAIR

English, XVIII Century

Open slightly flaring back with cupid's bow top rail, upon elaborate openwork interlaced strapwork splat; open S-scrolled and voluted arms on incurvate supports; slip seat in antique crimson silk damask, on square chamfered and stretchered legs.

250- 314. PAIR ADAM CARVED BEECHWOOD AND GREEN DAMASK ARMCHAIRS

English, XVIII Century

Cartouche-shaped guilloche-carved back with leaf cresting, open guilloche-carved arms with armpads, the serpentine seat rail similarly carved; swelling fluted and tapering legs carved with collars of leafage. Covered in antique green silk floral damask. These chairs were formerly gilded.

330- 315. PAIR ADAM RICHLY CARVED MAHOGANY SIDEBOARD PEDESTALS WITH URNS

English, XVIII Century

Quadrangular pedestal cupboard with interior shelves; the door is richly carved with a garlanded patera beneath a ram's head with drapery festoons and enclosed by husk pendants, beneath a frieze of leaf swags hung from a patera and two finely carved rams' heads at the corners. The plinth supports a quadrangular urn enriched with bowknotted paterae and husk pendants and brass lion-mask ring handles, the rising top with acorn finial; interior slotted for knives. *Total height 5 feet 10 inches; width 19½ inches*

[See illustration]

90- 316. CHIPPENDALE CARVED MAHOGANY CLAW-AND-BALL FOOT TOWEL RACK

English, XVIII Century

Round support with spirally fluted vase turnings and two double horizontal arms; on arched tripod support with claw-and-ball feet, castored.

Height 40 inches; width 33 inches

Collection of Sir Thomas Firbank

From Arthur S. Vernay, Inc., New York

470- 317. PAIR HEPPLEWHITE CARVED MAHOGANY ARMCHAIRS IN THE FRENCH TASTE

English, XVIII Century

Cartouche-shaped molded back crested with a small anthemion motive, open bowed arms with armpads on serpentine molded supports; anthemion-carved seat rail, flower-carved cabriole legs. Back, seat, and armpads covered in antique green silk floral damask.



[NUMBER 315]

318. ADAM PAINTED AND DECORATED SOFA

English, XVIII Century

790- Arched back rounding into closed sides with armpads and incurvate supports, narrow seat rail, the four round frontal legs fluted and tapering. Finished parchment and painted with a running vine of green husks, the legs with collars of leafage. Covered in fawn basketry silk.

Length 6 feet 8 inches

From Schmitt Bros., Inc., New York

90- 319. EARLY GEORGIAN CARVED AND PARCEL-GILDED WALNUT WALL MIRROR

English, XVIII Century

Upright molded frame with gilded leaf fillet, valanced and scrolled base, and arched and fret-scrolled crown centred with an embrasure containing a gilded rocaille motive; with restorations.

Height 33 inches; width 21½ inches

320. CHIPPENDALE FRETTED MAHOGANY TWO-FOLD BOUDOIR SCREEN

English, XVIII Century

55- Panels inset on one side with fine chain-stitch silk floral embroidery on an ivory ground, the reverse with Chinese painted paper; on turned spindle supports with an *ajouré* lower band of fretwork in the Chinese taste.

Height 45½ inches; width 42 inches

From Arthur S. Vernay, Inc., New York

170- 321. PAIR CHIPPENDALE CARVED MAHOGANY AND LEATHER ARMCHAIRS

Exceptionally wide, open fan-shaped back with pierced beaker-form splat, bowed arms with incurvate fluted arm supports; slip seat in brown leather, chamfered and stretchered square legs.

322. SHERATON MAHOGANY SPIDER-LEG DROP-LEAF TABLE *English, XVIII Century*

110- Oblong top with two drop leaves, the narrow underframing cyma-curved at the ends; on slender box-stretchered spindle legs with gates.

Height, 27½ inches; length open, 35 inches

From Arthur S. Vernay, Inc., New York

175- 323. CHIPPENDALE CARVED MAHOGANY CHEST OF DRAWERS

English, XVIII-XIX Century

Oblong top bordered with an edging of leaf-carved lunettes; front with four long graduated cockbeaded drawers with brass bail handles; base finished with a narrow border of leaf carving and standing on fret-carved bracket feet.

Height 40½ inches; length 41 inches



[NUMBER 324]

420- 324. SHERATON INLAID MAHOGANY WARDROBE CABINET *English, XVIII Century*
 Upright with scrolled and rosetted pediment, mock dentiled cornice and frieze inlaid with
 rosettes and mock flutings; double doors inset with oval panels of finely figured mahogany,
 two small and two long banded drawers below with oval brasses. Reconditioned, and
 fitted with sliding oak shelves. *Height 7 feet; width 50 inches*

From Arthur S. Vernay, Inc., New York

[See illustration]

325. PAIR HEPPLEWHITE CARVED MAHOGANY ARMCHAIRS

110-

Broad open back with bow-shaped top-rail centred with a carved patera and husk pendants, on a pierced quintuple beaker-form splat; open arms and incurvate supports, seat in aubergine striped wool velours, on square molded and chamfered legs joined by enclosed stretchers. One is apparently of the period.

From Arthur S. Vernay, Inc., New York

105-

326. SHERATON DECORATED SATINWOOD AND MAHOGANY CABINET

English, Late XVIII Century

Galleried upper section containing two recesses, the lower body with two cupboards painted with nose-gays of flowers and opening to a nest of two small and three long drawers; turned stump feet.

Height 45 inches; width 41 inches

105-

327. SHERATON MAHOGANY SEMICIRCULAR HUNTING SIDEBOARD

Half-round rimmed top with slightly convex front containing five drawers surrounding a valanced knee-hole; round reeded and tapering legs. *Height 32 inches; length 44 inches*

35-

328. GEORGIAN TURNED MAHOGANY FOLDING GATELEG TABLE

Oval hinged top supported on a turned and blocked cross frame with hinged gate.

Height 29 inches; length 31 inches

329. SET OF FOUR HEPPLEWHITE CARVED MAHOGANY SIDE CHAIRS

English, Late XVIII Century

140

Country chair with open back and pierced vasiform splat interlacing with a pendant; slip seat in dark brown striped velours, on square tapering and stretchered legs.

From Arthur S. Vernay, Inc., New York

15-

330. GEORGE III ORMOLU-MOUNTED MAHOGANY TORCHÈRE

Old claw-foot torchère, refitted for electricity as floor lamp, with bronze shade.

Height 5 feet 5 inches

331. INLAID MAHOGANY AND OLD GOLD BROCATELLE SOFA

Hepplewhite Style

160-

Arched back curving into outscrolled closed sides, on tapering square legs inlaid with satinwood panels. Covered in old gold silk brocatelle with a latticed floral design, with loose seat cushion.

Length 6 feet 6 inches

331A. CARVED AND PARCEL-GILDED WALNUT VARGUEÑO, WITH FORGED IRON MOUNTS

Spanish, Late XVI Century

320-

Fall-front chest with elaborate *ajouré* latticed iron mounts upon panels of red velvet, with fine original lock and hasp; opening to interior fitted with numerous drawers with arcaded portico fronts finished with spirally fluted colonnettes and gilded and bone ornaments. On *taquillón* base with two drawers over two cupboards, paneled with lozenge motives and inlaid in bone.

Height 5 feet 2 inches; width 44 inches

From Arthur S. Vernay, Inc., New York

140- 332. FOUR ADAM CARVED BEECHWOOD AND MAHOGANY OVAL-BACK ARMCHAIRS
Oval back with three vertical bar splats centred with carved rosette paterae; open beaded arms and supports, square fluted and tapering legs. Seats in antique rose crimson silk floral damask. One apparently of the period.

333. ADAM CARVED, GILDED, AND POLYCHROMED LOVE SEAT

English(?), XVIII Century

200- Serpentine-arched back ornamented with carved and gilded leafage and an anthemion cresting; the back, scrolled sides and seat cushion covered in fawn basketry silk; on round fluted swelling and tapering legs. Painted turquoise blue, the carved details picked out with gilding.
Length 53 inches

95- 334. ADAM-HEPPLEWHITE INLAID MAHOGANY OVAL CENTRE TABLE

Galleried oval top, the rim inlaid with striping, the top centred with a patera; frieze with single drawer ornamented with inlaid panels; inlaid square tapering legs.

Height 30¼ inches; length 39 inches

335. PAIR CHINESE FINELY CARVED TEAKWOOD TREASURY DOORS

Early XVIII Century

Each lavishly carved with figures of dragons writhing amid clouds, the broad frames with large bronze mounts elaborately engraved with scrolling dragons.

Height 5 feet 4 inches; width of each 31½ inches

From S. & G. Gump Co., San Francisco

130- 336. PAIR CARVED MAHOGANY CLAW-AND-BALL FOOT BEDSTEADS *Chippendale Style*

Arched and scrolled molded head rail ornamented with a trail of blossoms taking the contour of the crown; low rococo-scrolled foot posts, acanthus-carved cabriole legs with ball-and-claw feet. With box springs and mattresses. *Height 54 inches; width 48 inches*

From Arthur S. Vernay, Inc., New York

140- 337. PAIR CARVED MAHOGANY BEDSTEADS

Chippendale Style

Headboard with serpentine-arched crown bordered with carved rosettes and centred with a scallop shell; low quadrangular footposts with a richly carved finial composed of flowers, leafage and S-scrolls. With box springs and mattresses.

Height 49 inches; width 45 inches

From Arthur S. Vernay, Inc., New York

85- 338. EMPIRE ORMOLU-MOUNTED MAHOGANY DRESSING TABLE WITH MIRROR

Circa 1815

Oval swing mirror on parcel-gilded supports, table with white tapestry marble top and long frieze drawer, supported on scrolled end braces. With Empire ormolu mounts.

Height 51 inches; width 32 inches

From S. & G. Gump Co., San Francisco

50- 339. TWO TURNED MAHOGANY TOWEL RACKS

Sheraton Style

Slender turned and blocked uprights with four plain round crossbars, on arched and stretchered trestle bases.

Height 46 inches; width 30 inches

- 115- 340. PAIR BRASS AND WHITE METAL FLOOR LAMPS
Adjustable; fitted for electricity, with shades. *Height 5 feet 1 inch*
- 10- 341. UPHOLSTERED COGSWELL ARMCHAIR IN ROSE AND YELLOW SILK BROCATELLE
With overstuffed back and seat and open arms covered in brocatelle patterned with rows of scrolling stems and blossoms.
- 17¹⁰- 342. PAIR MAMMOTH CAROLEAN BRASS ANDIRONS
Large gadrooned spherical andirons with vase finials, in the seventeenth century style; on scrolled base centred with a lion-mask ring. *Height 34½ inches*
- 5- 343. OLD ENGLISH LEATHER WASTE BASKET
Decorative piece. *Height 9½ inches*

FUR RUGS

- 20- 344. TWO PANTHER RUGS
Small pelts, dressed and mounted with masks and claws.
- 45- 345. THREE GRAY WOLF SKIN RUGS
Dressed and mounted. *5 feet x 2 feet 6 inches*
- 35- 346. TWO BROWN BEAR SKIN RUGS
Dressed and mounted, with masks and claws. *Lengths 6 feet and 6 feet 3 inches*
- 30- 347. WHITE POLAR BEAR SKIN RUG
Dressed and mounted, with mask and claws. *Length 7 feet 6 inches*
- 60- 348. LEOPARD SKIN RUG
Dressed and mounted with mask and claws. *Extreme length 8 feet*
- 70- 349. WHITE POLAR BEAR SKIN RUG
Dressed and mounted, with mask and claws. *Length 9 feet 10 inches*
- 45- 350. BENGAL TIGER SKIN RUG
Massive pelt, dressed and mounted with mask and paws. *Extreme length 10 feet 7 inches*
- 80- 351. POLAR BEAR SKIN RUG
Dressed and mounted, with mask and claws. *Length 9 feet 4 inches*
- 15- 352. TWO ANIMAL SKIN RUGS
Pelts of a puma and white bear, mounted and dressed, with masks.
- 65- 353. TWO ANIMAL SKIN RUGS
Small pelts of a leopard and white bear, mounted with masks and claws.

[END OF SECOND SESSION]

\$ 15.006-

THIRD AND LAST SESSION

Saturday, April 10, 1943, at 2 p. m.

CATALOGUE NUMBERS 354 TO 528 INCLUSIVE

PAINTINGS

DANIEL GARDNER

BRITISH: 1750-1805

45- 354. *PORTRAIT OF THE DAUPHIN*. Half-length figure to half left of a young prince wearing the star and ribbon of the Saint Esprit and carrying a bamboo cane beneath his arm.
Oval pastel: 9 x 7¼ inches

AMERICAN SCHOOL

XVIII CENTURY

100- 355. *PORTRAITS OF A LADY AND GENTLEMAN: TWO PAINTINGS*. Waist-length figures to half right and half left, respectively; the lady, in mauve gown with white transparent fichu and headdress, the gentleman in scarlet uniform coat with black facings. Gray backgrounds.
Oval: 11½ x 9½ inches

HENRY ALKEN [FOLLOWER OF]

BRITISH: 1784-1851

160- 356. *THE FOX-HUNT: FOUR SCENES*. Open country with low brush, rivulets, and scattered trees, depicting various stages of the hunt: gallop across country, taking a brook, asking directions from a bystander, and the fox in view.

Board: 7¾ x 11 inches

BRITISH SCHOOL

CIRCA 1840

55- 357. *LANDSCAPE WITH FIGURES*. A couple conversing and a man resting by a roadside; at the left, a stream bordered by a gabled cottage and windmill.

10 x 14 inches

WILLIAM HAMILTON, R.A.

BRITISH: 1751-1801

375- 358. *WILLIAM BALLINGALL, R.N.* Bust-length figure, turned slightly to the left, of a young man with powdered hair, wearing a blue velvet coat and striped yellow waistcoat.

12 x 10 inches

GEORGE ROMNEY [SCHOOL OF]

BRITISH: CIRCA 1800

100- 359. *PORTRAIT OF A GIRL IN GRAY*. A fair-haired girl, in gray and white frock and brimmed hat, is resting beneath the spreading branches of trees, a market basket upon one arm.

12 x 10 inches

JEAN BAPTISTE MONNOYER

FRENCH: 1634-1699

410- 360. *VASES OF FLOWERS: TWO PAINTINGS*. A pair of gilded and gad-rooned urns containing a colorful assortment of tulips, roses, carnations and bluebells; placed upon rock slabs with miniature birds and insects about the bases.

Panel: 9½ x 7 inches

JAMES POLLARD (ATTRIBUTED TO)

BRITISH: 1797-1859

410- 361. *ON THE WAY TO THE HUNT, RADNOR MEET.* Whips in scarlet coats with the pack before the gate and twin red brick buildings of an estate; at the left a coach-and-four. Signed at lower right J. POLLARD, and dated 1839. 18 x 24 inches

175- JOHN FREDERICK HERRING, JR.

BRITISH: 1810-1892

362. *ENGLISH FARMYARD IN WINTER.* Three horses, a white, a black, and a sorrel, standing in an enclosure with chickens, before snow-covered country and thatched farmhouses. Signed at lower right J. F. HERRING, and signed on back of canvas, and dated 1861. 12 x 18 inches

85- FRANCIS WHEATLEY, R.A.

BRITISH: 1747-1801

363. *SQUIRE OSBALDESTON.* Standing full-length figure of a young man dressed as a M.F.H. in pink coat, seen before a landscape of green fields bordered at the right by a diagonal line of woods. 17½ x 14 inches

140- HENRY ALKEN (ATTRIBUTED TO)

BRITISH: 1784-1851

364. *SHOOTING SCENES: FOUR PAINTINGS.* Sportsmen in buff coats and top hats are depicted in a rowboat upon a winding river, taking aim at flying duck, and tramping through wild brush and cultivated fields with their dogs pointing snipe, partridge and pheasant. All signed at lower left or right H. ALKEN. 10½ x 14½ inches

100- HENRY ALKEN

BRITISH: 1784-1851

365. *FIGHTING COCKS.* Two bantam cocks spurred and fighting in a small clearing, before a tree and shrubs in brown autumn foliage opening at centre to a vista; dark blue cloudy sky. Signed at lower left, H. ALKEN. 13½ x 17 inches

From Arthur Ackermann & Son, Inc., New York

85- J. J. CLARK

BRITISH: XIX CENTURY

366. *FIGHTING COCK.* A brown and white cock, equipped with spurs, standing in profile upon a green platform, before a tan background. Signed at lower right J. J. CLARK. Cradled panel: 14 x 11¼ inches

From Arthur Ackermann & Son, Inc., New York



[NUMBER 367]

JOHN FREDERICK HERRING, SR., R.B.A.

BRITISH: 1795-1865

367. MR ISAAC DAY'S 'CARAVAN'. A dark brown thoroughbred, standing in a field in profile to the right, mounted by a jockey in white, with green cap; background of fields, extending to a low broad valley. Signed at lower right, J. F. HERRING.

22 x 30 inches

Caravan: winner of seventeen races, 1837-1841; second in the Derby, 1837.

Painted in 1841

From Arthur Ackermann & Son, Inc., New York

[See illustration]



[NUMBER 368]

775
GEORGE STUBBS, R.A.

BRITISH: 1724-1806

368. 'SWEET BRIAR'. A black thoroughbred, in profile to the left, is standing in a field, before a thatch-roofed house and stables surrounded in the middle distance by low trees and a fence. Signed at lower centre, GEO. STUBBS, *p.*, and dated 1779.

Cradled panel: 23 x 29 inches

Collection of Miss Saltonstall, Hatchford, Cobham, Surrey, 1807

From Arthur Ackermann & Son, Inc., New York

Exhibited at the Turf Gallery, Conduit Street, London

Illustrated in Walter Shaw Sparrow, *George Stubbs and Ben Marshall*, 1929, opp. p. 16

Engraved by George Townley Stubbs

[See illustration]



[NUMBER 369]

BEN MARSHALL

BRITISH: 1767-1835

369. *THE FAVORITE HUNTER OF LADY FRANCES STEPHENS*. Brilliantly lighted figure of a bay thoroughbred standing saddled, in profile to the right, before a column and steps of a veranda. Landscape background extending to a copse of trees, and sloping off at the left. Cloudy blue summer sky. Signed at lower right, B. MARSHALL, *pt.*, and dated 1799. 25 x 30 inches

2.310- Frances Augusta Eliza Pierrepont, only daughter of Charles, 1st Earl Manvers, and his wife, Anne Orton, youngest daughter of John Mills, Esq. She married, firstly, Oct. 20, 1802, Admiral William Bentinck who died Feb. 21, 1813, by whom she had two sons and one daughter (who married the Rev. George Martin, Chancellor and Canon of Exeter); and secondly, July 30, 1821, Henry William Stephens, Esq. She died at Bishopsteighton, Feb. 10, 1847.

Painted for the family in 1799

From M. Knoedler & Co., New York

From Arthur Ackermann & Son, Inc., New York

[See illustration]

SIR WILLIAM BEECHEY, R.A.

BRITISH: 1753-1839

370. *THE MEREDITH CHILDREN*. Two boys, one sitting on the ground, before the reeds of a river bank, and one kneeling tying a sinker to a fishing line. Both are dressed in brown suits with white ruffs framing their fresh faces; one has fair hair, and one brown hair, and regular handsome features. At the right are a basket, a jar, and two fish.

50 $\frac{3}{4}$ x 41 inches

2.000- Mr. W. Roberts, in a MS. certificate, dated 24.6.20, which will be given to the purchaser, writes: "very attractive & interesting example of Beechey's work quite unknown to me when I was compiling my 'Life' of that artist, in which I should have been only too glad to have included a reproduction of it. . ."

From Lewis & Simmons, London

From the John Levy Galleries, Inc., New York

From Clapp & Graham Co., New York

Exposition de Portraits de Femmes et d'Enfants (as by Lawrence), Paris, 1897

[See illustration]



[NUMBER 370]



[NUMBER 371]

THOMAS BIRCH

AMERICAN: 1779-1851

371. 'POINT BREEZE' ON THE DELAWARE. A group of three ladies and two gentlemen in Empire costumes are gathered upon a wide terrace, overlooking a view of a broad valley, with sailing boats and launches upon the glistening river. Tall slender trees and flower beds frame the scene. *Height 40 inches; length 56 inches*

1-200
An inscription in French, pasted on back of canvas, reads (translated): "View of 'Point-Breeze' on the Delaware, near Philadelphia, U. S. A. . . . The estate of King Joseph Bonaparte, where he stayed after the fall of the First Empire in France, and where my great-grandfather, Count André Miot de Melito, spent a year on a visit in 1820/21, in remembrance of which the King, upon his return to Europe, made him a gift of the present picture. (Signed) Eugène de Maucler, July 5, 187. . ."

An aquatint of a similar view has been pub'd by P. Price, Jr., Philada. for the *Casket*, entitled *View near Bordentown, from the Gardens of the Count de Survilliers*, the Comte de Survilliers being the assumed name of Joseph Bonaparte while in America.

From Daniel H. Farr Co., Inc., New York

[See illustration]



[NUMBER 372]

THOMAS BIRCH

AMERICAN: 1779-1851

372. *VIEW FROM THE HILL AT BORDENTOWN, NEW JERSEY.* Wide view of the placid river, seen from an elevation above the tributary which winds in from the right past a mansion and wooded shores; figures in boats dot the water, which extends into the far distance at the left. Inscribed on back of canvas, by *Tho. Birch*, 1818, *Philadelphia*. 38 x 49 inches

1-200 A similar view has been engraved for the *Portfolio* by Goodman & Piggot.

From Daniel H. Farr Co., Inc., New York

[See illustration]

JAKOB PHILIPP HACKERT (CALLED HACKERT OF ITALY)

GERMAN: 1737-1807

110- 373. *MARINE WITH BRITISH MERCHANTMEN.* View of a harbor with a lighthouse at centre and a breakwater at right behind which can be seen anchored shipping. At the left are two merchantmen carrying the red ensign and in extreme foreground barefooted fishermen hauling a boat on to a strip of land. Signed below *PH. HACKERT, pinx*, and dated 1773(?). 34 x 53 inches

From Arthur S. Vernay, Inc., New York

THOMAS HUDSON

BRITISH: 1701-1779

160- 374. *PORTRAIT OF A GENTLEMAN*. Waist-length portrait to the right, looking towards the observer, of a young man with powdered tie wig, wearing sapphire blue velvet coat with narrow trimming of ermine, and white lace jabot; carrying a *tricorne*. Within a painted oval. 29½ x 24½ inches

From the Howard Young Galleries, New York

DOMINIQUE SERRES, THE ELDER, R.A.

BRITISH: 1722-1793

110- 375. *PORTRAIT OF THE ARTIST*. Depicted seated on a shore in the shelter of an overhanging ledge of rock, before a view at the left of square-rigged ships and smaller sailing craft upon the Channel; wearing a green coat with rose facing, and holding a paper and pencil. 24 x 19½ inches

Collection of Miss Brock, London, a direct descendant of the painter

From Thomas Agnew & Sons, London

SPANISH SCHOOL

XVII CENTURY

90- 376. *PORTRAIT OF A LADY*. Half-length figure to half right of a young woman with brown hair falling in curls to her shoulders, wearing a dark brown gown with slashed sleeves and lace *berthe*. Draped background with a landscape vista at the right. 29½ x 23½ inches

AUSTRIAN SCHOOL

XVIII CENTURY

575- 379. *PORTRAIT OF A LADY*. Three-quarter-length portrait, seated to half left of a woman with powdered hair dressed with pearls and a blue ribbon and wearing a blue and white gown with a portrait miniature of a gentleman and red ribbon and pendant of a Bourbon family order. Background with crimson draperies. Miniature is signed with initials K. O., and dated 1761. 42 x 33¾ inches

GIOVANNI PAOLO PANNINI

ITALIAN: C. 1695-1768

700- 380. *LANDSCAPE WITH ARCHITECTURAL BUILDINGS AND FIGURES*. Hilly verdant country separated from the foreground by a winding stream. Upon the far shore is a classic temple and adjacent buildings; upon the near bank at left is a statue and fallen masonry among Ionic columns, with figures of rustics resting and conversing nearby. 39¼ x 44½ inches

110- JAN WYCK

DUTCH: 1640/5-1702

381. *VIEW OF A PALLADIAN MANSION, WITH FIGURES*. An English palace façade and gardens, with figures strolling upon the paths and flagged terrace in the foreground, interspersed with strutting peacocks and playing hounds; at the left, a mountain rises in the distance, beneath a cloudy twilight sky. 24½ x 29½ inches

120- GIOVANNI PAOLO PANNINI (ATTRIBUTED TO)

ITALIAN: C. 1695-1768

382. *FIGURES AMONG ARCHITECTURAL RUINS*. A perspective of two rows of columns supporting architraves, seen through an ornate ruined arch, leading to a view of a distant mountain peak; at both sides are adjacent arches opening onto extensive courts or forums. Figures wander among the fallen masonry. 46 x 45 inches

FRANÇOIS CHARLES CACHOUD

FRENCH: B. 1866

175- 383. *CLAIR DE LUNE*. Trees casting shadows on the white walls of two cottages, one with a lighted open door; a vista of fields in the background. Signed at lower right F. CACHOUD. 29½ x 31¾ inches

EDOUARD CORTES

FRENCH CONTEMPORARY

120- 384. *PORTE ST. DENIS*. Gaily lighted Parisian street scene, with pedestrians, cabs, and a horse-drawn bus. Signed at lower right, EDOUARD CORTES.

19¾ x 25½ inches

BRITISH SCHOOL

EARLY XIX CENTURY

60- 385. *WOODLAND GLADE*. Gnarled and tangled trunks of forest trees with branches reaching to form a canopy of foliage overhead. A woman in red, accompanied by several children, enters the scene from the right, looking towards a man asleep by a tree in the middle distance and a shepherd boy driving sheep through a sunlit clearing.

39¾ x 55½ inches

From the Thompson Collection, New York, 1870

WILLIAM KEITH

AMERICAN: 1839-1911

110- 386. *ROCKY MOUNTAINS*. A gully, cutting through sloping mountainsides which obscure the sky at right and left, leads toward a view of distant snow-capped peaks; at the right, a knotted pine dominates the foreground. Signed at lower right, W. KEITH, and dated 1900.

30 x 40 inches

From S. & G. Gump Co., San Francisco

BRITISH SCHOOL

XIX CENTURY

10- 387. *FOX-HUNTING SCENE*. Hounds following the fox to the bank of a stream below a rocky ledge, huntsmen in pink coats appearing above. Signed.

18¾ x 24½ inches

WILL SPARKS

AMERICAN: B. 1862

80- 388. *AUTUMN LANDSCAPES: TWO PAINTINGS*. A view of a village, lighted by sunlight penetrating rainclouds, with a brilliant group of autumn trees at the left; and a golden brown field in Sonoma Co., California, bounded by wild brush and low trees with a woman appearing in the middle distance. Signed WILL SPARKS, the second dated 1918.

20 x 30 inches and 16 x 22 inches

From S. & G. Gump Co., San Francisco

150- WILLIAM KEITH

AMERICAN: 1839-1911

389. *A FOREST OPENING*. Impenetrable woods, with sunlight falling upon the trunks at the left, border a wide clearing which leads to an open vista of fields; at the right, an isolated tree is outlined against the sunset sky. Signed at lower right, W. KEITH.

26 x 33 inches

From S. & G. Gump Co., San Francisco

WILLIAM KEITH

AMERICAN: 1839-1911

90- 390. *GOLDEN HOUR: LANDSCAPE SKETCH.* A placid river flowing between dark wooded banks, cattle watering in the distance. 16 x 24 inches
From S. & G. Gump Co., San Francisco

ENGLISH XVIII CENTURY FURNITURE
AND DECORATIONS

40- 391. PAIR STAFFORDSHIRE FIGURES OF CATS Circa 1810
Seated animal with white body stippled in yellow, on green plinth. One with age crack.
Height 4¾ inches

150- 392. BOW CANDLESTICK STATUETTE Circa 1760
Figure of a little boy in rose coat amid a flowering boscage restored with a blue and gold candle *bobèche*; repaired. Anchor and dagger mark. Height 9½ inches
From Arthur S. Vernay, Inc., New York

60- 393. TORTOISE-SHELL OCTAGONAL TEA CADDY English, circa 1810
In finely figured shell with domed umbrella cover; ivory finial and ball feet. Height 7¼ inches

[See illustration on page 104]

30- 394. GARNITURE OF THREE OLD BRISTOL MILK WHITE GLASS VASES
Gallipot-form vase in milky glass, delicately painted in colors with festoons of flowers. [Lot.] Heights 8½ and 10 inches
From Arthur S. Vernay, Inc., New York

50- 395. BOW PORCELAIN STATUETTE Circa 1750
Figure of a shepherdess in flowered pink petticoat, striped skirt, and royal blue bodice, her apron filled with flowers; a lamb reclines at her feet. Chipped and repaired. Height 10½ inches
From Arthur S. Vernay, Inc., New York

110- 396. BOW PORCELAIN STATUETTE Circa 1755
Figure of a young girl, symbolizing Flora, wearing a flowing rose scarf lined in royal blue, standing beside a mammoth urn of flowers; rococo base. Red anchor and dagger mark. Modeled by Tebo. Height 11¼ inches
From Arthur S. Vernay, Inc., New York

35- 397. DERBYSHIRE SPAR AND CRYSTAL LUSTRE CANDLESTICK
English, XVIII Century
Ovoid body, on cylindrical plinth, fitted with cut crystal stellate *bobèche* hung with tear lustres. Wired for electricity. Height 16 inches

398. STAFFORDSHIRE BUST OF THE REV. GEORGE WHITEFIELD, BY ENOCH WOOD

Circa 1790

Bust-length figure of the divine, in black clerical garb and curled white periwig. Stamped medallion upon the back.

Height 13¼ inches

From Arthur S. Vernay, Inc., New York

[See illustration]

399. PAIR BATTERSEA ENAMEL CANDLESTICKS

Circa 1770

Knopped and balustered shaft and wide circular foot, painted with nosegays of flowers within rococo gilded cartouches. One repaired.

Height 11½ inches

From Schmitt Bros., Inc., New York

[See illustration]

400. DR. WALL WORCESTER DECORATED PORCELAIN TEA SERVICE

Circa 1750

Comprising a paneled teapot, fluted sugar bowl, waste bowl and four cups. Painted with scattered nosegays of spring flowers in bright colors. Square mark. [Lot.]

From Arthur S. Vernay, Inc., New York

401. WEDGWOOD ORMOLU-MOUNTED BLUE AND WHITE JASPER VASE MOUNTED AS LAMP

Circa 1780

Krater-form vase ornamented with a collar of plantain leaves and a frieze band of Vitruvian scrolls; mounted with original ormolu handles composed of entwined snakes. Fitted for electricity, with shade. Repaired.

Height 28 inches

402. FINE BATTERSEA ENAMEL JEWEL BOX

Circa 1760

Large oblong box with plaquettes of romantic landscapes with mansions and figures in the manner of Richard Wilson, R.A., within rococo frames encrusted in white enamel; original ormolu rim mounts.

Length 8½ inches

From Arthur S. Vernay, Inc., New York

403. DERBYSHIRE SPAR VASE, MOUNTED AS LAMP

English, XVIII Century

Semi-ovoid vase on high cylindrical plinth. Fitted for electricity, with shade.

Height 21 inches

404. WEDGWOOD BLACK BASALT TWO-HANDLED URN

Circa 1795

Ovoid urn in the Adam taste, modeled with a mythological figure group, with two twin serpent handles springing from Medusa heads; cover surmounted by a finial figure of the winged horse Pegasus.

Height 17¼ inches

[See illustration]

Illustration of number 398 appears facing page 108; of number 399 on page 61; of number 404 on page 94.



[NUMBER 405]

405. IMPORTANT CHARLES II REPOUSSÉ SILVER TAZZA, WITH ANIMAL DECORATION
London, 1669

275 Round tazza with plain shallow cavetto, pinhole-engraved with initials and date 1676 within a small garland; the broad flat border *repoussé* and chased in bold relief with figures of a running lion, stag and griffin, separated by clusters of large peonies and other blossoms; on low hollow flaring foot showing hand-hammered surface. Four marks on rim including maker's mark (1 w with three pellets above and a billet below).

Diameter 14 $\frac{1}{4}$ inches

Note: A closely similar example to this fine specimen of Carolean embossed work was in the William Randolph Hearst collection (Part IV) sold at these Galleries in 1939. The present maker's mark has been found on a salver shown at the Burlington Fine Arts Club Exhibition (Jackson, p. 131).

75 Collection of Col. Campbell, Port Regis, Isle of Thanet, Kent

[See illustration]

406. HORN CIGARETTE BOX, MOUNTED IN SILVER

Fashioned of white horn with a natural striped figure, mounted with borders of silver chased with floral ornament; lined with tortoise-shell.

English, circa 1820

Length 8 $\frac{1}{2}$ inches



[NUMBER 407]

407. FINE CHARLES II REPOUSSÉ AND CHASED SILVER PORRINGER CUP AND COVER

London, 1664

Bulbous cup with plain hammered incurvate neck above a beautifully chased and *repoussé* frieze with figures of a bear and a crouching lion amid large blossoms, wrought in bold relief; two S-scrolled handles embellished with nilling and small female heads. The cover, which is finished with a flat disk-form top and can be reversed to form a small tazza, is chased with figures of animals and flowers similar to those on the body. Four marks on cover and underfoot, including maker's mark T L and scallop shell, unidentified.

Height 6½ inches

Collection of Col. Campbell, Port Regis, Isle of Thanet, Kent

[See illustration]

408. TWO DERBYSHIRE SPAR VASES, MOUNTED AS LAMPS *English, XVIII Century*

Small urns, one ovoid, one pear-shaped, on square plinths. Fitted for electricity, with shades.

Height 18 inches



[NUMBER 409]

500- 409. PAIR CARVED, PAINTED AND GILDED FIGURE CANDELABRA, WITH CRYSTAL LUSTRES

English(?), XVIII Century

Standing figure of a negro painted black and entwined with a gilded snake; upholding two gilded and S-scrolled arms for lights festooned with faceted tear lustres in white and yellow tinted glass. Repaired.

Height 24 inches

[See illustration]

410. PAIR QUEEN ANNE BRASS AND IRON ANDIRONS, WITH FIRE TOOLS

Globular ball-top andiron, with scrolled base cast with a coroneted bust of Queen Anne, flanked by coiled dolphins. With brass shovel, tongs, and poker with knopped faceted tops. [Lot.]

Height of andirons 23 inches

411. PAIR GEORGIAN CUT CRYSTAL GLASS LUSTRE CANDLESTICKS

Diamanté ovoid shaft supporting scalloped urn-shaped *bobèche* and grease tray hung with faceted lustres; on Adam square blue and white jasper ware plinth decorated with draped classical medallions, and mounted in ormolu.

Height 14½ inches

[See illustration]

412. IMPORTANT STAFFORDSHIRE STATUETTE OF S. PAUL, BY ENOCH WOOD

Circa 1790

Standing bearded figure of S. Paul preaching at Athens, in mauve-lined turquoise green cloak, bending forward with his right arm outthrust; at his left side a manuscript on a marbled plinth ornamented with a bas relief of Mercury protecting shipping; on oblong base glazed lapis blue. Minor repairs, as usual.

Height 19 inches

Note: This fine subject, Enoch Wood's masterpiece, is illustrated in color as a frontispiece to *The Earle Collection of Staffordshire Pottery*, by Maj. Cyril Earle, n.d.

From Arthur S. Vernay, Inc., New York

[See illustration]

413. WEDGWOOD BLUE AND WHITE JASPER VASE, MOUNTED AS LAMP *Circa 1780*

Tall-necked ovoid vase decorated with a frieze of athletes and maidens and with two mascaron and animal-head handles (one repaired). Fitted for electricity, with shade.

Height 31 inches

414. PAIR GEORGIAN BELL METAL AND IRON ANDIRONS, WITH FIRE TOOLS

English, XVIII Century

Small andirons with iron tool rests and hexagonal bell metal finials. Together with old steel poker, shovel, and tongs with knopped urn finials. [Lot.]

Height of andirons 16 inches

Illustration of number 411 appears on page 95; of number 412 on page 110.



[NUMBER 415]

415. PAIR FINE GEORGE III ORMOLU AND CUT GLASS LUSTRE CANDELABRA

English, XVIII Century

650 Steeple-form standard of Waterford type cut glass surmounted by a split vase finial hung with lustres, the central support sustaining two S-hooks and three curved arms for lights with urn *bobêches* linked by festoons of faceted tear lustres. On incurvate square base in Bristol gold-decorated blue glass mounted in ormolu. *Height 30¼ inches*

From Arthur S. Vernay, Inc., New York

[See illustration]

130 416. SHERATON INLAID SYCAMORE AND THUYA WOOD BALLOON CLOCK

English, circa 1800

Small mantel clock inlaid with plaquettes of thuya wood; dial chipped.

Height 10¼ inches

From Arthur S. Vernay, Inc., New York

[See illustration facing page 64]

40 417. CHIPPENDALE CARVED MAHOGANY GALLERY-TOP TRAY

Oblong with chamfered corners and surrounded by a pierced and latticed gallery, repaired.

Length 25½ inches



[NUMBER 418]

418. CHIPPENDALE RICHLY CARVED MAHOGANY URN STAND

English, XVIII Century

80- Octagonal dish top, fluted support with acanthus-carved baluster-form knob and arched tripod ending in snake feet, the legs curiously carved with a rosetted interlacing ribbon motive. Rare.

Height 22 inches; diameter 11½ inches

[See illustration]

60- 419. GEORGE III MAHOGANY BOOT RACK

Plain trestle support with fitted racks.

From Arthur S. Vernay, Inc., New York

*English, circa 1800**Height 31¾ inches; width 22¾ inches*

420. PAIR ADAM GILDED GESSO FILIGREE GIRANDOLE MIRRORS

Small oval mirror supporting two leaf-voluted arms for lights fitted for electricity, and springing from a base hung with an acanthus pendant; the whole surmounted by an Adam urn hung with husk pendants, supported upon a spider-web plinth finished with rams' heads, and flaring into elaborate leaf volutes. Minor imperfections, as usual.

Height 45 inches; width 17 inches

From Arthur S. Vernay, Inc., New York

421. SHERATON WROUGHT STEEL FIRE GUARD AND THREE FIRE TOOLS

English, XVIII Century

U-shaped guard pierced with interlaced ovals enclosing quatrefoil and patera designs. Urn-top shovel, poker, and tongs of somewhat later date. [Lot.]

Length of guard 42½ inches

422. SHERATON FRUITWOOD OCCASIONAL TABLE *English, Late XVIII Century*

Chamfered oblong top with reeded edge and plain frieze, supported on tapering square legs slightly outcurved at the foot, with plain X-stretcher.

Height 29 inches; width 16 inches

From Arthur S. Vernay, Inc., New York

423. CHIPPENDALE CARVED MAHOGANY URN STAND *English, XVIII Century*

Square top bordered with a pagoda gadroon molding, on frieze edged with leaf scrollings centring a small shell pendant; slender chamfered quadrangular legs joined by X-stretcher. Rare type.

Height 27 inches; width 15 inches

424. SHERATON INLAID MAHOGANY CELLARETTE *English, circa 1800*

Of upright square box-form with zinc liner, containing a zinc-lined drawer in base; inlaid with holly stringing. Rare size.

Height 27 inches; width 11 inches

From Arthur S. Vernay, Inc., New York

425. GEORGIAN MAHOGANY LIBRARY ARMCHAIR *English, XVIII Century*

Square back with vertical splats, open bowed and scrolled arms, saddle seat on chamfered square legs with X-stretcher.

From Arthur S. Vernay, Inc., New York

426. PAIR SHERATON INLAID MAHOGANY OCTAGONAL CANDLESTANDS

English, Early XIX Century

Octagonal top bordered with a narrow banding, on four slender incurvate supports terminating in serpentine flaring legs.

Height 28¼ inches; width 16¾ inches

427. SHERATON INLAID SATINWOOD AND BIRD'S-EYE MAPLE OCCASIONAL TABLE

English, Late XVIII Century

Oblong top with inset rounded corners, veneered with bird's-eye maple and banded in mahogany; paneled frieze with one drawer, square tapering legs.

Height 26½ inches; width 19¼ inches



[NUMBER 428]

200- 428. PAIR ADAM CARVED, PAINTED, AND PARCEL-GILDED ARMCHAIRS IN APPLE GREEN BROCADE *English, Early XIX Century*
 Molded shield-shaped back, short open arms terminating in acanthus volutes and resting on incurvate supports carved with pendants of husks; rosetted dies, round fluted and tapering legs; painted black with gilded moldings and carved ornament. The back and seat covered in fine eighteenth century green silk floral brocade.

[See illustration]

200- 429. PAIR ADAM CARVED, PAINTED AND PARCEL-GILDED ARMCHAIRS IN APPLE GREEN BROCADE *English, Early XIX Century*
 Similar to the preceding.

200- 430. PAIR ADAM CARVED, PAINTED AND PARCEL-GILDED ARMCHAIRS IN APPLE GREEN BROCADE *English, Early XIX Century*
 Similar to the preceding.



[NUMBER 431]

WEDGWOOD BASALT URN: NUMBER 404

854
431. CHIPPENDALE CARVED MAHOGANY PEDESTAL CABINET *English, XVIII Century*
Tapering square pedestal with molded top, carved at the edge, and paneled sides, the
cupboard door ornamented with a carved rococo cartouche of foliations; gadrooned base
with bracket feet.

Height 43 inches; width 22½ inches

[See illustration]



[NUMBER 432]

GEORGIAN LUSTRE CANDLESTICKS: NUMBER 411

432. QUEEN ANNE CARVED AND INLAID PALISANDER WOOD CARD TABLE

English, Early XVIII Century

270 Quartered and banded folding oblong top with outset half-round front corners outlined by circles of crossbanding, the pattern of the inlays repeated on the interior, which is dished with money pockets; scalloped frieze with single drawer, on slender acanthus-carved cabriole legs with snail feet.

Height 30 inches; length 31½ inches

[See illustration]



[NUMBER 433]

433. GEORGE II RICHLY CARVED MAHOGANY AND NEEDLEPOINT UPHOLSTERED
ARMCHAIR WITH LION-PAW FEET

English, XVIII Century

500
Deep rectangular back with closed outscrolled arms and seat, all covered in very choice needlepoint of the period worked with cartouches of flowers and fruit largely in *petit point*, in a *tête de nègre* ground filled with colorful foliations, the back with an exceptionally fine *petit point* cartouche with figures of Harlequin and Columbine beneath a palm tree. On cabriole legs, all four of which are fully carved with acanthus scrolls at the knees and terminate in large lion-paw feet.

[See illustration]



[NUMBER 435]

[NUMBER 434]

434. GEORGE I CARVED WALNUT CLAW-AND-BALL FOOT CORNER CHAIR

English, XVIII Century

Voluted semicircular back on round uprights and two plain vasiform splats; quarter-round slip seat in old black leather, stretchered cabriole legs terminating in ball-and-claw feet, the front leg carved with a shell motive. Rich patina.

Note: A rare and finely carved specimen dating from 1715-20, and described by Mr Vernay as "the finest example of this type I have ever seen".

Collection of Briton Riviere, Esq.

From Arthur S. Vernay, Inc., New York

[See illustration]

435. GEORGIAN CARVED WALNUT CORNER CHAIR

English, XVIII Century

Type of the preceding, but with two pierced vasiform splats of early Chippendale type, and plain cabriole front leg with club foot; seat in crimson silk damask.

[See illustration]

55- 436. SHERATON INLAID MAHOGANY CANDLESTAND *English, Late XVIII Century*
Square top with valanced gallery, frieze fitted with candle slide, square tapering, slightly
splayed legs joined by arched X-stretcher. Inlaid with small panels and bandings of
satinwood and hollywood stringing. *Height 27 inches; width 12 inches*

40 437. CHIPPENDALE CARVED MAHOGANY TOWEL RACK *English, XVIII Century*
Molded square uprights supporting four cross bars, on arched trestle base carved with
acanthus and ending in snake feet, connected by a double quadrangular stretcher. One
leg repaired. *Height 45 inches; width 30½ inches*
From Arthur S. Vernay, Inc., New York

115- 438. GEORGE III MAHOGANY BEAU BRUMMEL *English, XVIII Century*
Box body with two hinged flaps each containing a small drawer, with a long drawer in
the frieze and a triptych mirror at rear, rising in a slot; quadrangular front legs with
X-stretcher. *Height closed 37 inches; width 22½ inches*

70- 439. GEORGE III INLAID MAHOGANY WASHSTAND *English, XVIII Century*
Square double hinged top opening to embrasure fitted with a porcelain bowl in the
Lowestoft style; on slender quadrangular legs, with undershelf containing a small
drawer. *Height 32 inches; width closed 14 inches*

70- 440. WILLIAM AND MARY TORTOISE-SHELL WALL MIRROR *English, circa 1700*
Square arched and shaped frame with a single-arch molding veneered with beautifully
mottled tortoise-shell; old beveled Vauxhall glass. *Height 29 inches; width 22½ inches*
From Schmitt Bros., Inc., New York

140- 441. HEPPLEWHITE MAHOGANY AND TAN FLORAL CHINTZ BENCH *English, XVIII Century*
Oblong top covered in flowered chintz; on six cabriole legs. *Length 51 inches*

90- 442. ADAM INLAID MAHOGANY CONSOLE TABLE *English, XVIII Century*
Small semicircular table, the top inlaid with a fan and honeysuckle pendants, the frieze
with oval paterae; on fluted and tapering slender round legs, collared with leafage at
the knees. A very rare size. *Height 32¼ inches; width 20 inches*
From Arthur S. Vernay, Inc., New York



[NUMBER 443]

443. SET OF SIX HEPPLEWHITE CARVED MAHOGANY SIDE CHAIRS

English, XVIII Century

Open arched back, the crowning rail carved with an anthemion and two husk pendants and supported on a pierced balloon-form splat with rosette and husk carved tracery; slip seat in brown striped wool velours, on square chamfered legs with stretchers. One apparently of later date.

From Arthur S. Vernay, Inc., New York

[See illustration of two]

440- 444. GEORGIAN TURNED MAHOGANY DISH-TOP TORCHÈRE

English, XVIII Century

Circular dish top on tall turned and knopped baluster support and cyma-curved tripod with snake feet.

Height 44½ inches; diameter 12 inches

From Arthur S. Vernay, Inc., New York



[NUMBER 445]

445. CHIPPENDALE MAHOGANY AND NEEDLEPOINT WING ARMCHAIR

English, XVIII Century

355 Broad back with serpentine wings, closed outscrolled sides and seat cushion, all covered in needlepoint of the period worked with colorful blossoms and scrolling leafage in a *tête de nègre* ground, centring upon the seat cushion a strapwork medallion of fruit, and upon the back a more elaborate medallion with *petit point* figure of a lady in a garden; on square molded legs with enclosed stretchers.

[See illustration]



[NUMBER 446]

446. CHIPPENDALE FINELY CARVED MAHOGANY CLAW-FOOT PIECRUST TABLE

English, XVIII Century

110 Circular top with finely molded piecrust edge, tilting on a round column with spirally fluted vase turning and cyma-curved tripod, richly carved with a cartouche and pendant of foliage, and terminating in claw feet with an incipient ball.

Height 28 inches; diameter 30 inches

From Arthur S. Vernay, Inc., New York

[See illustration]



[NUMBER 447]

150 447. CHIPPENDALE CARVED AND GILDED PIER MIRROR *English, XVIII Century*
Upright arched and scrolled mirror surrounded by a mirror border, the crown lavishly
embellished with rococo scrolls entwined with flowers and centring a floral cartouche
with the figure of an eagle. Old two-section glass.

Height 6 feet 6 inches; width 45 inches

[See illustration]



[NUMBER 448]

448. CHIPPENDALE FINELY CARVED MAHOGANY AND NEEDLEPOINT ARMCHAIR

English, XVIII Century

190 Open fan back with rococo-carved and valanced crowning rail resting upon an intricate splat of interlacing strapwork ornamented with foliage; open bowed and leaf-voluted arms on sharply incurvate supports, chamfered quadrangular stretched legs. Seat in needlepoint of later date, depicting *petit point* bird monsters and a donkey amid baroque foliage.

[See illustration]



[NUMBER 449]

[NUMBER 450]

TORTOISE-SHELL OCTAGONAL TEA CADDY: NUMBER 395

230- 449. HEPPLEWHITE INLAID MAHOGANY PEMBROKE TABLE *English, XVIII Century*
Oval top with two drop leaves, quartered and inlaid with an oval medallion and decorative border; single end drawer inlaid with a patera garlanded with iris; rosetted dies and square tapering legs with spade feet. *Height 28 inches; length open 39½ inches*

[See illustration]

190- 450. GEORGE II CARVED MAHOGANY ARMCHAIR *English, XVIII Century*
Flaring open back has scrolled ears and pierced beaker splat. Grooved and voluted arms, carved cabriole front legs with scrolled feet. Seat in green damask.

[See illustration]



[NUMBER 451]

451. PAIR CHIPPENDALE FINELY CARVED MAHOGANY AND
NEEDLEPOINT ARMCHAIRS

English, XVIII Century

Open back with richly molded S-scrolled crowning rail with voluted ears, centring a vasiform ribbon splat carved with rosettes and enclosing an anthemion motive, crested above by a bowknotted leaf spray; the uprights are richly carved with a trailing branch of leafage and grapes. Open bowed and rocaille-carved arms upon incurvate supports carved with an elongated acanthus leaf; on chamfered and molded square legs with a vine carving similar to that of the uprights and joined by enclosed stretchers, carved with a rosetted guilloche motive. The seat is covered in modern *petit point* of fine quality, worked with a colorful nosegay of garden flowers in naturalistic hues on a buff ground.

Note: This and the following number constitute an exceptionally fine set of Chippendale chairs remarkable for the rich profusion and careful detail of the carved ornament, which is crisply executed. The undulating vine pattern on the legs and uprights probably derive from the carver's recollection of the frieze of an Elizabethan court cupboard. The design of the splat is of exceptional merit.

From the Bourne family, Acton Hall, Worcs.

Collection of Bradley Martin, Esq., Ham Court, Upton-on-Severn, Worcs.

From Arthur S. Vernay, Inc., New York

[See illustration]

452. PAIR CHIPPENDALE FINELY CARVED MAHOGANY AND
NEEDLEPOINT ARMCHAIRS

English, XVIII Century

Similar to the preceding.

650- See note to the preceding.

From the Bourne family, Acton Hall, Worcs.

Collection of Bradley Martin, Esq., Ham Court, Upton-on-Severn, Worcs.

From Arthur S. Vernay, Inc., New York

453. RARE CHIPPENDALE CARVED, PAINTED AND GILDED SOFA

English, XVIII Century

325- Serpentine arched back, the crowning rail gadrooned and crested with a nosegay of flowers, the back curving into abruptly scrolled and molded arms with armpads; deeply valanced seat apron, on cabriole legs carved with cartouches at the knees; the frame is painted in turquoise blue and gilding. Covered in beige silk poplin.

Length 7 feet 4 inches

Note: In the 'French' taste of Thomas Chippendale and evidently by the same hand as the smaller and closely similar settee formerly in the Henry Hirsch collection and illustrated in Macquoid & Edwards, *Dictionary of English Furniture*, 1927, Vol. III, fig. 51, a type described by the authors as "the culmination of grace. The curves are considered so carefully that a sense of action is conveyed, almost suggesting actual movement".

From Schmitt Bros., Inc., New York

[See illustration]

454. SHERATON PAINTED AND DECORATED ARMCHAIR

English, circa 1800

650- Slightly scrolled fan back with saltire splat surmounted by a crowning rail painted with figures of a woman and children in a wooded landscape; short bowed arms and vase-turned supports, seat in green denim, round ring-turned and tapering legs.

455. SHERATON GILDED OVERMANTEL MIRROR, INSET WITH EIGHTEENTH CENTURY
CHINESE GLASS PAINTINGS

700- Triple mirror with fluted frame and reeded pilasters, containing a mirror glass flanked by two fine Chinese mirror paintings of young ladies fishing in a lake.

Height 20 inches; length 50½ inches

From Schmitt Bros., Inc., New York

456. CHIPPENDALE MAHOGANY CLAW-AND-BALL FOOT TOWEL RACK

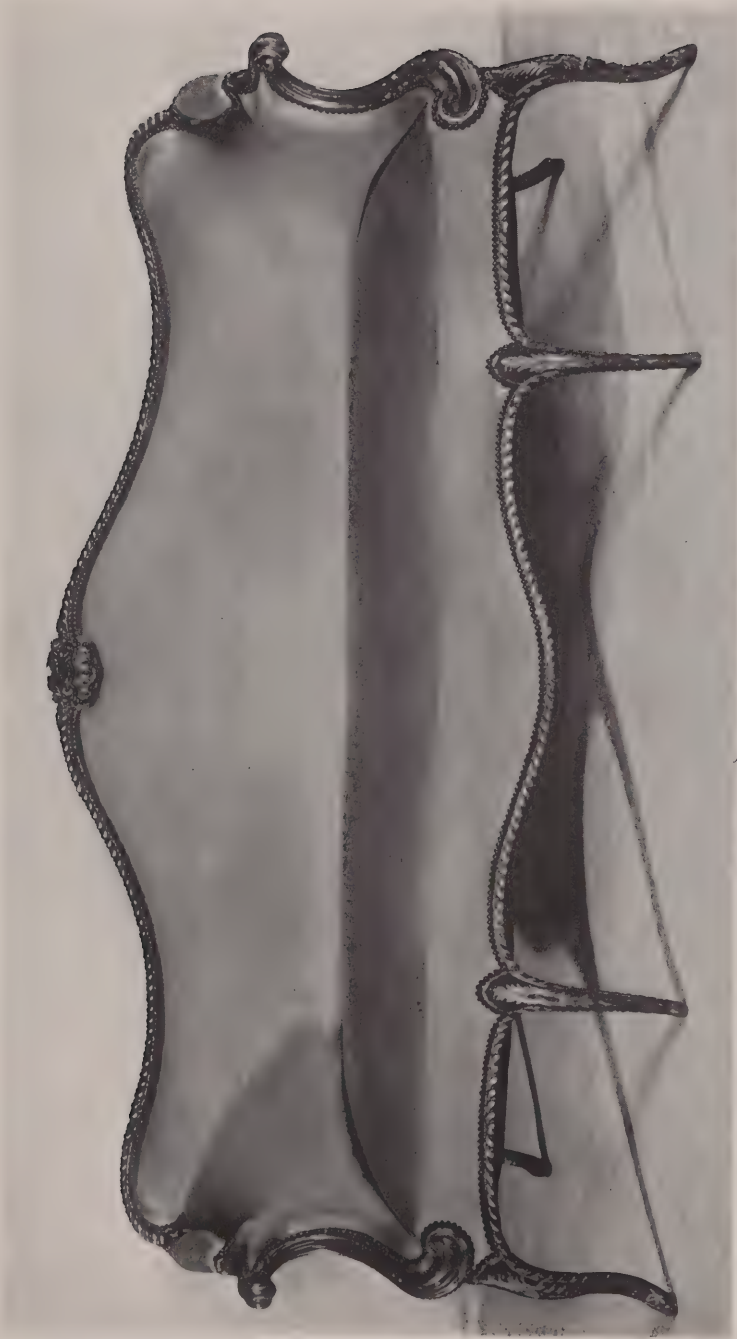
English, XVIII Century

950- Double baluster support with two rotating arms and turned vase finial; on cyma-curved tripod with ball-and-claw feet.

Height 41 inches; width 30 inches

Collection of Sir Thomas Firbank

From Arthur S. Vernay, Inc., New York



[NUMBER 453]

457. SHERATON MAHOGANY ARMCHAIR, CONVERTIBLE INTO LIBRARY STEPS

English, circa 1810

Incurvate back with bar slat and boldly voluted and reeded open arms; cane seat with cretonne seat cushion, incurvate legs. Hinged and convertible into library steps, with four treads covered in red turkey work.

Height of steps 29 inches

From Arthur S. Vernay, Inc., New York

458. CHIPPENDALE RICHLY CARVED GALLERY-TOP CLAW-FOOT TEA TABLE

Old chamfered square top bordered with a canted gallery (repaired), elaborately pierced with leaf scrollings and shell ornaments, and tilting on a bird-cage support with fluted column and leaf-carved knob; on acanthus-carved tripod base with paw feet.

Height 29½ inches; width 27 inches

459. ADAM CARVED MAHOGANY SECRETARY-CABINET

English, XVIII Century

Small cabinet of delightful miniature proportions, with balustraded gallery surmounting paneled double doors ornamented with rosettes at the corners and opening to interior fitted with shelves and pigeonholes. Shallow hinged slant-front desk below, covered in leather and fitted with small drawers, a long drawer in the frieze with ormolu bail handle; square molded and tapering legs carved with paterae and husk drops at the knees. Fine ruddy patina.

Height 5 feet 5 inches; width 24 inches

[See illustration]

460. SHERATON INLAID MAHOGANY AND SATINWOOD TAMBOUR-TOP

WRITING DESK

English, XVIII Century

Arched tambour top opening to baize-lined desk with pigeonholes and small drawers, the frieze with one long drawer; on tapering square legs, castored. Banded and paneled in satinwood.

Height 35½ inches; width 32½ inches

461. SHERATON INLAID MAHOGANY WORK TABLE

English, circa 1810

Small Regency table with banded oblong top and convex front fitted with two drawers simulating three, with brass rosette handles; ring-turned round tapering legs with X-stretcher.

Height 30 inches; width 19 inches

462. PAIR SHERATON INLAID MAHOGANY AND LEATHER LIBRARY CHAIRS

English, XVIII Century

Square reeded back, downcurved reeded arms and supports, square tapering legs with spade feet; the dies at the joints inlaid with small rosette medallions. Back, seat, and armpads covered in worn maroon leather.

463. CHIPPENDALE CARVED MAHOGANY CLAW-AND-BALL FOOT TOWEL RACK

English, XVIII Century

Trestle with three rails, on shell-carved flaring legs with claw-and-ball feet.

Height 46 inches; width 31 inches

From Arthur S. Vernay, Inc., New York

464. GEORGE III SANTO DOMINGO MAHOGANY SPINDLED GATE-LEG TABLE

English, XVIII Century

Oblong top with two drop leaves and single end drawer, on slender turned and blocked spindle legs and gates.

Height 27¾ inches; length open 33 inches

From Arthur S. Vernay, Inc., New York



[NUMBER 459]

STAFFORDSHIRE BUST BY ENOCH WOOD: NUMBER 398



[NUMBER 465]

STAFFORDSHIRE STATUETTE BY ENOCH WOOD: NUMBER 412

465. SHERATON INLAID MAHOGANY SWELL-FRONT SIDEBOARD

English, XVIII Century

600- Oblong top with sharply convex front containing a central long drawer above a valanced knee-hole, flanked on one side by two small drawers and on the other by a deep bottle drawer; on graceful quadrangular tapering legs with spade feet. The drawers are elegantly crossbanded and furnished with large oval brasses and bail handles, the stiles inlaid with pairs of oval paterae.

Height 36 inches; length 54 inches

From Arthur S. Vernay, Inc., New York

[See illustration]



[NUMBER 466]

466. CHIPPENDALE FINELY CARVED MAHOGANY AND CRIMSON SILK DAMASK
UPHOLSTERED SOFA *English, XVIII Century*

Oblong back with short closed sides and serpentine seat covered in fine old Spanish rose-crimson silk damask of the period, the incurvate arm supports finished with a crisply carved cabochon and acanthus volute; the valanced rails carved in the French taste with rocaille ornament and scrolling leafage, the three cabriole front legs carved with garlanded shell motives at the knees, and ending in voluted feet. *Length 5 feet 2 inches*

Note: An important sofa in Chippendale's French style of 1765-70, the rich carving of the legs and rails following with unusual closeness the best work of the Régence. The treatment of the arms is original and effective.

[See illustration]

467. PAIR QUEEN ANNE WALNUT AND GREEN SILK DAMASK SIDE CHAIRS *English, Early XVIII Century*

Double-arched back with pierced beaker splat, the slip seat in green silk damask of the period, in plain rails; cabriole legs ending in club feet.

468. UNIQUE SHERATON MAHOGANY FIVE-PEDESTAL DINING TABLE

English, Late XVIII Century

A remarkable table consisting of two half-round console ends, and three rectangular centre sections, each tilting upon a baluster-turned pedestal and graceful quadrangular cyma-curved tripod legs shod in brass and casters.

Height 30½ inches; total length 12 feet 4 inches; width 5 feet

Note: This is, we believe, the first five-pedestal dining table of the period to appear at public sale at these galleries, a sufficient indication of its rarity. An example with five four-legged pedestals, at Hardwick Hall, Shropshire, is illustrated in Macquoid & Edwards, *Dictionary of English Furniture*, 1927, Vol. III, fig. 27. Both types date from about 1795.

[See illustration]

469. PAIR HEPPLEWHITE CARVED MAHOGANY AND RED LEATHER SIDE CHAIRS

English, XVIII Century

Open camel back carved with a patera and two husk pendants on the crowning rail, the balloon splat centred with a species of fleur de lis; slip seat in sealing-wax red leather, on square tapering legs with stretchers.

470. ADAM CARVED MAHOGANY AND GREEN SILK DAMASK WINDOW SEAT

English, XVIII Century

Seat and upholstered scrolled ends covered in fine Spitalfields green silk damask of the period; fluted rails with rosette-carved dies, round fluted and tapering legs.

Length 42 inches

471. GEORGE III INLAID MAHOGANY AND SATINWOOD CANED HUNTING CHAIR

English, XVIII Century

Caned sides and square back, acanthus-carved frontal supports; seat cushion and arm-pads in eighteenth century crimson silk damask. The rails and square tapering legs all inlaid with panels of satinwood.

472. SHERATON INLAID MAHOGANY AND SYCAMORE LYRE TABLE

English, circa 1800

Octagonal banded top on sycamore slender open lyre-form trestle supports joined by a traverse and inlaid with stringing; finished with small inlaid rosettes.

Height 22¼ inches; width 22 inches

From Schmitt Bros., Inc., New York

473. HEPPLEWHITE INLAID SATINWOOD SERPENTINE-FRONT CABINET

English, XVIII Century

Oblong top with serpentine front and containing two cupboard doors; on square tapering legs. The top and cupboards are banded and inlaid with small medallions of root-wood, garlanded with leafage.

Height 34 inches; length 43 inches

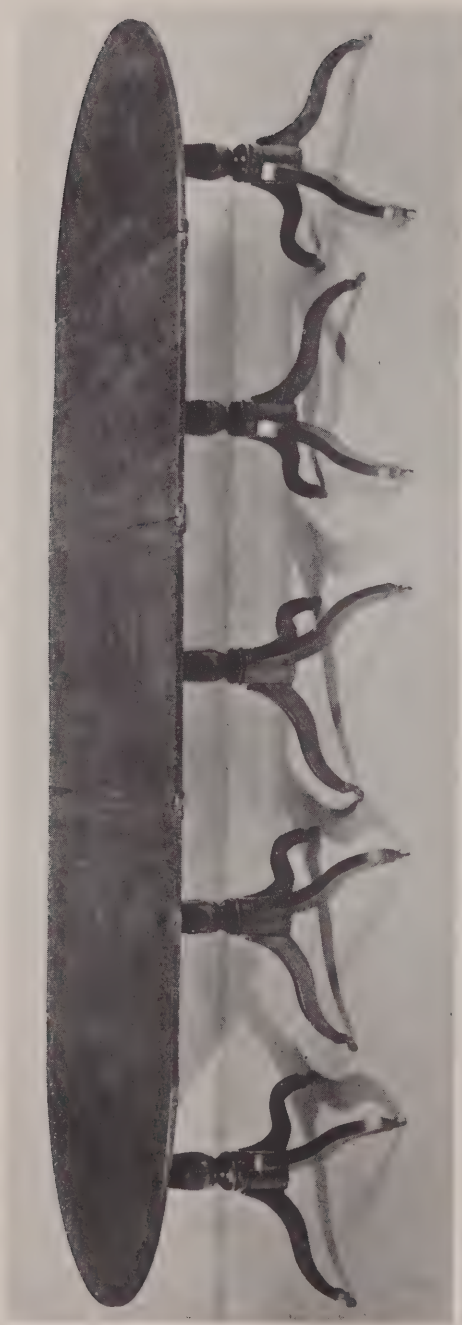
474. PAIR SHERATON INLAID SATINWOOD DEMI-LUNE CONSOLE TABLES

English, Late XVIII Century

Semi-oval banded top on frieze with paneled inlays and dies painted with Adam vases; four round tapering legs painted with collars of leaf pendants at the knees and supporting an undershelf.

Height 36 inches; lengths 41 and 44 inches

From Arthur S. Vernay, Inc., New York



[NUMBER 468]

225- 475. GEORGE II INLAID MAHOGANY SECRETARY-CABINET *English, XVIII Century*
 Arranged with two plain cupboards opening to adjustable interior shelves, flanking a taller central cabinet with glazed front rising into a high cyma-curved and peaked hooded pediment; the underbody with a half-hinged writing flap covered in old green leather surmounting two small and three long drawers with rococo escutcheons and handles, between quarter-round fluted pilasters standing upon high plinths; serpentine bracket feet. Rich dark patina. *Height 7 feet 3 inches; width 53 inches*

[See illustration]

90- 476. PAIR ADAM CARVED MAHOGANY OVAL-BACK ARMCHAIRS *English, XVIII Century*
 Oval molded back, armpads, and shield-shaped seat covered in light green twill; serpentine molded arm supports, fluted seat rails, round stop-fluted and tapering legs.

180- 477. SHERATON INLAID MAHOGANY COLLECTOR'S CABINET *English, XVIII Century*
 Oblong top, the front with double cupboards opening to a nest of a great number of small shallow drawers; the top and cupboards paneled with string inlays of hollywood. *Height 45½ inches; width 33 inches*
 From Arthur S. Vernay, Inc., New York

160- 478. CHIPPENDALE CARVED MAHOGANY AND NEEDLEPOINT ARMCHAIR *English, XVIII Century*
 Open fan back with bow-shaped top rail, on pierced and strap-scrrolled vasiform splat; open curved arms and supports, slip seat in needlepoint, on acanthus-carved cabriole legs with club feet.

570- 479. GEORGE III MAHOGANY KNEEHOLE DRESSING TABLE *English, XVIII Century*
 Oblong top with convex front containing a cockbeaded long drawer and four small drawers surrounding an arched kneehole; round fluted and tapering legs with leaf-carved caps. *Height 32 inches; length 37 inches*

180- 480. CHIPPENDALE CARVED MAHOGANY AND NEEDLEPOINT TWO-BACK LOVE SEAT *English, XVIII Century*
 Two-chair-back with interlaced strap-scrrolled splats, and shaped crowning rail carved with foliage, open arms with leaf-carved and shaped supports, on curiously shaped splayed front legs with cabriole knees carved with acanthus leafage; the seat in eighteenth century *gros point* woven with large clusters of blossoms in a gray ground. Reconstructed. *Length 43 inches*



[NUMBER 475]

481. CHIPPENDALE MAHOGANY SOFA IN EIGHTEENTH CENTURY NEEDLEPOINT

600- Serpentine arched back with closed outscrolled arms and seat cushion, all covered in choice early eighteenth century needlepoint worked with huge Baroque fruits and leaf clusters in lively colors in a fawn ground, the back centring a beautiful *petit point* cartouche with figures of Venus and two Cupids in a landscape within a strapwork panel; on square molded and tapering legs with stretchers. *Length 7 feet 3 inches*

[See illustration]

482. CHIPPENDALE MAHOGANY SOFA IN EIGHTEENTH CENTURY NEEDLEPOINT

675- Type of the preceding, with slight differences in the frame; covered in similar needlepoint, the back with a *petit point* cartouche of Flora and Cupid within a garland of flowers. *Length 7 feet 3 inches*

483. SHERATON INLAID SATINWOOD BOUDOIR WRITING DESK

English, Early XIX Century

115- Upper section with a small paneled cupboard flanked by two low plinths each containing a small drawer; upon a table paneled in old green leather, the frieze containing three drawers with brass rosette handles; inlaid square tapering legs. The five drawer fronts finely inlaid with cartouche-shaped panels of drapery festoons, the cupboard with elaborate panel centring an amaranth cartouche and a green-tinted oval patera.

Height 54 inches; width 36 inches

484. HEPPLEWHITE INLAID MAHOGANY SERPENTINE-FRONT CARD TABLE

English, XVIII Century

80 Serpentine oblong hinged top lined with green baize, plain shaped frieze inlaid with oval paterae at the corners; on square molded and tapering legs.

Height 29 inches; width 29 inches

485. CHIPPENDALE RICHLY CARVED MAHOGANY AND NEEDLEPOINT

UPHOLSTERED ARMCHAIR

English, XVIII Century

160- Square back and seat in modern needlepoint worked with large Baroque flowers and fruit with green leafage, in a tan ground; open curved arms with armpads, on incurvate frontal supports carved with a blossom and scrolling leafage above a single plantain leaf; on cabriole front legs carved with cartouches and rococo ornaments upon the knees, and ending in carved voluted feet.

486. ADAM CARVED MAHOGANY SIDEBOARD TABLE

English, XVIII Century

120 Oblong top, the frieze with egg-and-tongue molding surmounting a central plaquette carved with an urn festooned with draperies and two patera rosettes; on square fluted and tapering legs.

Height 33½ inches; length 5 feet 10 inches

487. CHINESE CHIPPENDALE CARVED AND GILDED WALL MIRROR

English, XVIII Century

200- Upright frame, bordered with beautifully pierced and carved rococo scrollings, flowers, and foliage and crested by an elaborate rocaille ornament.

Height 45½ inches; width 24 inches



[NUMBER 481]

488. IMPORTANT CHIPPENDALE CARVED MAHOGANY SECRETARY-BOOKCASE

English, XVIII Century

435
Upright with rococo-molded cornice, the frieze centred with a finely carved basket of flowers; two broad glazed doors, bordered with openwork frames, enclose a centre stile ornamented with an applied pendant of husk drops. The lower body with outset centre containing a drop-front secretary drawer, disclosing interior fitted with a leather-covered writing slide and numerous small drawers, surmounting double cupboards; this is flanked on either side by a drawer surmounting a single cupboard. The fronts of drawers and cupboards are richly ornamented with applied carved rococo strapwork and cartouche-form frames of foliage. *Height 8 feet 4 inches; width 5 feet 2 inches*

[See illustration]



[NUMBER 488]

489. CHINESE DECORATED BLACK AND COROMANDEL LACQUER EIGHT-FOLD SCREEN
Ch'ien Lung

300 Handsomely incised and painted in colors with a design of *fêng huang*, pheasants, and a multitude of smaller birds amid rockery and lotus plants around a pond and upon flowering branches of peony, camellia and plum trees; above are small panels with groups of flower vases and utensils, and below, small panels with figures of the animals of the Zodiac in landscape. The reverse exhibits cartouche, scroll and leaf-shaped medallions, four upon each panel, with arrangements of flowers and utensils, figures on terraces, birds, monsters and animals. *Height 8 feet 1 inch; length 11 feet 6 inches*

[See illustration]

490. SHERATON ROSEWOOD BACKGAMMON TABLE *English, Late XVIII Century*

300 Sofa table with oblong top and two rounded drop leaves, the centre section of the top sliding to disclose a finely inlaid backgammon board in bone and mahogany on ebony. On two reeded vase-turned supports and incurvate reeded legs joined by a turned stretcher, shod with brass claws and casters. *Height 28½ inches; length open 55 inches*

491. ADAM CARVED, PAINTED, AND GILDED SOFA *English, XVIII Century*

575 Arched horseshoe back with fluted crowning rail and scrolled and fluted frontal support terminating in an acanthus volute; doubly convex fluted front rails on stop-fluted cabriole legs with scroll feet. Painted with green and gilding. Covered in celadon silk taffetas, with two round *pouffe* cushions. *Length 6 feet 4 inches*

From Schmitt Bros., Inc., New York

492. ADAM INLAID SATINWOOD CHINA CABINET *English, XVIII Century*

300 Upper section with glazed double doors opening to shelves and surmounted by a low arched cornice and frieze inlaid with rosettes and leaf swags; below is a serpentine-front glazed cabinet on square tapering legs. The whole crossbanded in rosewood.

Height 5 feet 8 inches; width 34 inches

From Arthur S. Vernay, Inc., New York

200 493. HEPPLEWHITE INLAID MAHOGANY SERPENTINE-FRONT CHEST OF DRAWERS

English, XVIII Century

Banded oblong top with serpentine front containing three cockbeaded long drawers with relined interiors and having octagonal brasses; valanced apron with French feet.

Height 33 inches; length 40½ inches

From Schmitt Bros., Inc., New York



[NUMBER 489]

110- 494. SHERATON MAHOGANY CHINA CABINET

English, XVIII Century

Arched quadrangular case with two glazed doors having interlaced lattice of astragals, interior with adjustable shelves; on stand with quadrangular tapering legs and stump feet.

Height 6 feet 6 inches; width 30½ inches

110- 495. WILLIAM AND MARY WALNUT MARQUETRY TALL-CASE CLOCK

Thos. Taylor, London, circa 1695

Quadrangular hood with straight top, fretted frieze and spirally turned colonettes, enclosing a brass dial with maker's name and cherub-head spandrel, appliqués; the long case beautifully veneered with figured walnut, the door and base panel with an elaborate marquetry of urns and flowers in profusion, with birds, in tinted light woods in a dark ground; the door contains a green glass bull's eye.

Height 6 feet 10 inches; width 17 inches

Note: Thomas Taylor of Fetter Lane, Holborn, member of a famous clockmaking family: C. C. 1685 and master of the Clockmakers' Company in 1710. See Britten, 6th ed., p. 844.

Collection of D. A. F. Wetherfield, Esq.

From Arthur S. Vernay, Inc., New York

Recorded and illustrated in Britten, *Old English Clocks—The Wetherfield Collection*, 1907, p. 34 and fig. 41

[See illustration]

270 496. WILLIAM AND MARY WALNUT MARQUETRY TALL-CASE CLOCK

William Speakman, London, circa 1695

Quadrangular domed hood with three brass pointed globe finials and plain half-round colonettes enclosing a dial with silvered hour-ring, having maker's name and ormolu cherub-head spandrel ornaments; the long case furnished with an oval bull's-eye. The entire front is elaborately inlaid with borders and cartouches of flowers, the central cartouche also enclosing a bird, in shaded light woods, and finished with edging of barber-pole and herringbone inlays.

Height 7 feet 4 inches; width 14½ inches

Note: William Speakman, eminent maker, was apprenticed in 1654, became a member of the Clockmakers' Company in 1661 and Master in 1701. A marquetry clock by him is in the collection of the Vintners' Company.

From Arthur S. Vernay, Inc., New York

[See illustration]



[NUMBER 495]



[NUMBER 496]

157-497. SET OF SHERATON CARVED MAHOGANY DINING CHAIRS

Armchair and six side chairs. Open slightly arched square back with interlaced lancet trellis, the crowning rail carved with drapery festoons; seat in green denim, square tapering legs.

90-498. HEPPLEWHITE MAHOGANY AND RED LEATHER HUNTING ARMCHAIR

English, XVIII Century

Square molded back with closed sides having molded incurvate frontal supports; on square tapering legs. Back, seat, and sides covered in red leather.

499. SHERATON DECORATED AND INLAID SYCAMORE CHEVAL MIRROR

English, Late XVIII Century

Upright rising mirror with square banded posts surmounted by urn finials; on molded trestle supports. Painted with ribbon bowknots and husk drop ornament.

Height 5 feet 4 inches; width 28 inches

From Arthur S. Vernay, Inc., New York

105-500. QUEEN ANNE WALNUT PIER MIRROR

English, Early XVIII Century

Upright cove-molded frame with rounded and ogee-valanced crown; old Vauxhall two-section mirror in beveled glass.

Height 5 feet 1 inch; width 26½ inches

501. HEPPLEWHITE CARVED MAHOGANY AND CHINTZ SOFA IN THE FRENCH TASTE

English, XVIII Century

485- Serpentine arched back rounding into closed sides with incurvate molded frontal supports; on reeded cabriole front legs terminating in scroll feet. Covered in ecru floral chintz, with seat cushion.

Length 6 feet 9 inches

[See illustration]

70-502. GEORGIAN MAHOGANY AND LEATHER SETTEE

English, XIX Century

Oblong back with scrolled sides and three seat cushions covered in old brown leather; incurvate leaf-scrolled frontal supports, short square fluted and tapering front legs.

Length 6 feet 3 inches

30-503. HEPPLEWHITE MAHOGANY WORK TABLE WITH DECORATED TOP

English, XVIII-XIX Century

Oval hinged top painted with a medallion of classical figures and an inverted floral border; opening to a box body, on slender square, tapering, and flaring legs.

Height 25½ inches; width 18 inches



[NUMBER 501]

ANTIQUÉ CHINESE CARPETS

The Chinese carpets in this section of the catalogue were purchased from S. & G. Gump Co.,
San Francisco

- 45- 504. CHINESE DRAGON MAT *Ch'ien Lung*
Fawn ground woven with five scaly blue dragons surrounded by a wave border.
2 feet 2 inches square
- 25- 505. CHINESE RUG *Ch'ien Lung*
Old gold field woven with a rose fret medallion flanked by branches of large peonies with blue leafage; within an apricot chrysanthemum border. 3 feet 4 inches x 2 feet
- 30- 506. CHINESE ANIMAL RUG *Ch'ien Lung*
Tan field woven with figures of two white horses grazing beneath blue trees with golden yellow foliage, within a border of peonies. 3 feet 9 inches x 2 feet 1 inch
- 30- 507. ANTIQUE CHINESE PEONY RUG
Chestnut ground with sapphire blue and brown branches bearing yellow peonies, within a border of lozenge and triangular rosettes. 3 feet 3 inches x 1 foot 11 inches
- 55- 508. CHINESE PEONY RUG *Ch'ien Lung*
Pale chestnut ground patterned with light and dark blue branches of yellow peonies, flanking a fret medallion; border similar to the preceding.
3 feet 2 inches x 1 foot 10 inches
- 60- 509. CHINESE RUG *Chia Ch'ing*
Fluctuating old rose field diapered with rosettes in pale pastel hues touched with dark blue and brown; tan border with a rose T-fret. 4 feet 3 inches x 2 feet 3 inches
- 70- 510. CHINESE PEONY RUG *Yung Chên*
Rose red field overrun with spreading branches of beautiful blue, golden yellow, and white peonies with foliage; golden tan border of peony blossoms and leafage.
6 feet 7 inches x 4 feet 5 inches
- 80- 511. ANTIQUE CHINESE RUG
Rose red field woven in blue and white with a fretted floral medallion surrounded by butterflies and straggling sprays of small flowers and foliage; sapphire and powder blue peony borders. 9 feet 5 inches x 7 feet 5 inches
- 90- 512. CHINESE MEDALLION RUG *Ch'ien Lung*
Bois de rose ground woven in shades of blue, old gold and white with a circular peony medallion surrounded by vases and sprigs of flowers; golden yellow and midnight blue fret borders. 8 feet 8 inches x 5 feet 8 inches
- 110- 513. CHINESE RUG *Ch'ien Lung*
Woven on an old rose field in shades of blue, tan and ivory with a fretted peony medallion surrounded by varied vases of flowers, with fretted corner ornaments; tan peony and fret borders. Small repairs. 9 feet x 5 feet 10 inches



[NUMBER 514]

514. CHINESE FLORAL RUG

Ch'ien Lung

Golden yellow field woven with five circular peony medallions amid curving sprigs of rose and blue peonies and foliage; rose floral border with inner guard patterned with key-fret motive. In fine condition.

9 feet 6 inches x 6 feet

[See illustration]

515. CHINESE MEDALLION CARPET

Yung Ch'eng

Field of salmon pink woven in light and dark blue and white with a circular medallion of flowers and *chih lung* surrounded by scrolling sprays of peonies, amid birds and butterflies; narrow deep blue peony and vine-scroll borders.

11 feet x 8 feet 10 inches



[NUMBER 516]

516. CHINESE CARPET

Late Ch'ien Lung

300- Field of golden yellow, woven with five circular floral medallions amid scattered branches of flowers and fruit and six vases of delicate blossoms woven in shades of blue, rose, and tan; amid the flowers are hovering butterflies. Rose red border of peonies and foliage. In fine condition.

11 feet 10 inches x 9 feet 8 inches

[See illustration]

517. CHINESE CARPET

Chia Ch'ing

560- Rose red field, woven with rows of sprigs of pink peonies, camellias, and smaller blossoms in flowerpots, with fretted floral spandrels and circular medallion; lemon yellow border of peonies and curling tendrils, the inner guards with *lei wên* and pearl motive. In superb condition.

11 feet 7 inches x 10 feet



[NUMBER 518]

518. CHINESE CARPET

Chia Ch'ing

300 Field of golden yellow, woven with five circular floral medallions amid sprigs of flowers, butterflies, vases of fruit and blossoms, flutes and other components of the *po ku*, woven in shades of blue, rose, tan, and ivory; rosy tan peony border, with inner guards of *lei wên* fret and pearl motives, respectively. In fine condition. 11 feet 9 inches; x 9 feet 4 inches

[See illustration]



[NUMBER 519]

519. CHINESE CARPET

Ch'ien Lung

Beautiful apricot field woven in blue, white, and beige with rows of short sprigs of peonies centring a large peony medallion with fretted stems of leafage; straw yellow border of floral sprigs, butterflies, and precious emblems, with inner guards of *lei wên* and pearl motives. A rug of the finest quality.

14 feet 10 inches x 11 feet 6 inches

[See illustration]

520. ANTIQUE CHINESE CARPET

Tan field woven with an allover design of rows of circular medallions alternately containing floral clusters and landscape vignettes with a bat and a spotted deer, emblems of

[Number 520—Continued]



[NUMBER 521]

Number 520—concluded]

Happiness and Longevity, all surrounded by straggling creepers bearing peony blossoms: in shades of rose, light and dark blue, tan, yellow, and ivory. Sapphire blue border of cartouches containing emblems and separated by floral sprigs and butterflies, the inner guards with *lei wên* and pearl motive, respectively. 15 feet 2 inches x 12 feet 3 inches

521. ANTIQUE CHINESE CARPET

Design similar to that of the preceding with some variations, on a rose red field; this rug contains an additional floral border. 15 feet 11 inches x 12 feet 6 inches

[See illustration]



[NUMBER 522]

522. ANTIQUE CHINESE CARPET

500 Buff field woven with an allover design derived from the *po ku*, or Hundred Antiques pattern, of rows of floral sprigs, vases, flowerpots, flaming jewels, and other motives, each of the four jewels flanked by pairs of guardian *Fu* dogs of *bois de rose* color, a ninth animal pursuing the jewel in the centre of the carpet. The field is surrounded by a broad border of highly conventionalized wave design in graduated shades of blue, old rose, brown, fawn, and ivory.

18 feet 2 inches x 15 feet 9 inches

[See illustration]

500- 523. ANTIQUE CHINESE CARPET

Similar to the preceding.

18 feet 2 inches x 15 feet 8 inches



[NUMBER 524]

524. ANTIQUE CHINESE NINE-DRAGON CARPET

Buff field woven with a bold design of nine huge scaly blue and rose dragons writhing amid clouds in pursuit of the jewel, surrounded by a framework of formalized rockery and bubbles of spume from the waves beneath, which are rendered in conventionalized diagonal stripes of blue, rose, ecru, and ivory across the broad border.

18 feet 1 inch x 16 feet 3 inches

[See illustration]

525. ANTIQUE CHINESE NINE-DRAGON CARPET

Similar to the preceding.

18 feet 3 inches x 16 feet 2 inches

526. SHARISTAN PALACE CARPET WITH BIRDS

950

Field of pale fawn with soft lustre, woven allover in subdued tones with trees bearing variegated small blossoms and foliage, amid which are perched birds; within a broad wine red border of fringed leaf palmettes centring mascarons, garlanded with flowers and leafage interspersed with figures of wild game. 36 feet 8 inches x 15 feet 2 inches

527. CHINESE BLUE AND WHITE PHOENIX CARPET

450

Mazarine blue field woven in fawn and white with a naturalistic design of stems of variegated flowers, nelumbians, bamboos, and reeds, amid which are exotic *fêng huang*, or phoenixes, and small passerine birds in flight; grayish buff border of floral twigs and butterflies. 22 feet x 15 feet 6 inches

528. ANTIQUE NORTH PERSIAN HERATI RUNNER

170

Field of midnight blue trellised with the allover Herati floral pattern, principally in scarlet, green, blue, and tan, within a scarlet border of Caucasian latchhook rosettes and old gold and white floral guards. A rug of fine quality. 16 feet 10 inches x 3 feet 2 inches

[END OF SALE]

1 Persian #	17. 757 ⁵⁰
2 " "	18-006 -
3 " "	41-922 ¹²
<hr/>	
Total #	74. 686 -

FOR VICTORY



BUY
UNITED
STATES
WAR
BONDS
AND
STAMPS

PARKE-BERNET GALLERIES • INC

*designs its catalogues and directs
all details of illustration, text
and typography*

**THE METROPOLITAN
MUSEUM OF ART**

Thomas J. Watson Library

